

RED VELVET OIL

UPCYCLED & ECO-RESPONSIBLE BEAUTY IS A MOVEMENT

A game-changing Active oil for People and the Planet

At the heart of **RED VELVET OIL™** is a commitment to transparency, traceability, and responsible ingredient sourcing. Embodying powerful skincare benefits, and Australia's most ambitious upcycled beauty ingredient initiative in tackling the \$36.6 billion* annual food waste crisis by transforming 5000 tonnes of nutrient rich tomato seed waste into a high-value source of natural compounds known for their skin supporting properties:

- **Lycopene:** a powerful antioxidant that is twice as effective as beta carotene, targeting free radicals and supporting skin health, Red Velvet Oil™ contains 12mg of lycopene per 100g.
- **Phytosterols:** targeting to restore the skin's barrier function, reducing dryness and irritation.
- **Essential Fatty Acids:** Provides deep hydration and maintains skin elasticity.

Join the RED VELVET Revolution

FORMULATION GUIDES

- Revolution Nourish Lip Complex
- Day Defence Moisturiser
- Calm Nights Serum
- Revolution SPF50+ Sunscreen
- Daily Vege Shot Cleanser
- Shower I Bath I Body Oil
- Citrus Face Scrub
- Revolution Facial Oil

Translating **RED VELVET OIL™**, the hero upcycled ingredient delivering natural compounds to consider for a myriad of skin concerns, including anti-aging, scarring, inflammation, blemish control, hydration, hair care and sun protection.

Perfect for face serums, body oils, creams, lotions, cleansers, bath products, lip care, scrubs, hair/scalp care, oral care, all purpose balms and ingestible beauty product formulations.



RED VELVET OIL

KAGOME



NATIVE
EXTRACTS®

Australia's Upcycled Ingredient Innovation Partners

The Future is Upcycled On-Purpose

REDUCE | REUSE | REPURPOSE

Converting food waste streams into high value beauty ingredients - strategies for responsible ingredient choices that deliver.

As part of the zero-waste and upcycled beauty trend, **RED VELVET OIL™** demonstrates how innovative ingredients can align with consumer values. According to recent studies, 62% of consumers are willing to pay more for products addressing food waste, and 70% prefer products labelled "Upcycled Certified."** This new, pure, cold pressed 'active' oil is for modern, ethical and eco-conscious beauty brands and consumers alike.

The lineal model is not sustainable,
we must drive towards circularity.
The global economy is burning
through more primary materials than
ever before, with a lineal model of
take-make-waste.
Solutions lie in strategies for
prevention, reduction, reuse, and
value adding through the supply
chain.

AUSTRALIA'S MOST AMBITIOUS UPCYCLED INGREDIENT INNOVATION HUB

Where primary industry surplus/waste and innovation meets sustainability.

A purpose-driven collaboration between **NATIVE EXTRACTS**, a leading Australian phyto-tech company and **KAGOME** Foods Australia, one of the southern hemisphere's largest tomato processors, driving sustainable solutions for Beauty, Nutraceutical and agricultural sectors. This Hub signifies Australia's commitment to **UPCYCLED** Ingredient development from food waste, unlocking potential from other crops, creating a bridge to product innovation, new technologies and research, through to commercialisation and new ingredient deliverables, and **RED VELVET OIL™** is the first in the portfolio.

*Responsible brands demand
responsible products to give
consumers responsible options!*

Discover the versatile applications and be inspired by our formulation guides.

NATIVE EXTRACTS Connects brands
with responsible ingredients for
positive impact.

*Source: <https://www.dcceew.gov.au/environment/protection/waste/food-waste>

**Source: Innova Market Insights - <https://www.wherethefoodcomesfrom.com/upcycled>



Need help with NPD?
Access our NPD Resource Box library.

Arrange a discovery call with our
NPD Strategist.

enquiries@nativeextracts.com
+61 2 6686 5725

NATIVEEXTRACTS.com



RED VELVET OIL

Calm Nights Serum

FORMULATION GUIDE

Be the first to introduce Australia's
UPCYCLED Ingredient

Unwind and rejuvenate your skin with **Red Velvet Oil™** **Calm Nights Serum**, an exquisite blend of nature's finest ingredients designed to soothe and restore. Harnessing the power of **Red Velvet Oil™**, Native Sandalwood Seed Oil (Australian), Wild Yam Cellular Extract, Gotu Kola Cellular Extract, Chamomile Cellular Extract, and Mountain Pepper Berry Cellular Extract, this luxurious serum invites tranquility to your nighttime routine while nurturing your skin's natural beauty.

Lycopene

Repair

Collagen support

KAGOME  **NATIVE**
EXTRACTS

Australia's Upcycled Ingredient Innovation Partners



RED VELVET OIL™ Calm Nights Serum I NE-BN-S1



PHASE	NAME	INCI	%w/w	FUNCTION	DESCRIPTION (Hightlighted in orange, manufactured or supplied by NATIVE EXTRACTS Pty Ltd)
N – natural ND – naturally derived NE – manufactured / supplied by NATIVE EXTRACTS RSPO – derived from sustainable palm UP – upcycled					
A	Water demineralised (N)	Aqua	To 100	Solvent	Solvent for ingredients.
A	Certified Organic Glycerine (palm free) (ND)	Glycerin	4	Humectant	Glycerin is a humectant or water binding additive. It performs a number of functions in a formula including increasing solubility of some actives (herbal extracts, perfumes etc), acting as a moisture reservoir to prevent a product from drying out and/ or as a cost-effective skin conditioning agent.
A	Ecoge (ND)	Lysolecithin (and) Sclerotium Gum (and) Xanthan Gum (and) Pullulan	1	Thickener	This ingredient is s the first COSMOS-approved, natural gelling-emulsifying agent able to create light gel-creams. Ecogel™ is a patented optimized combination of natural origin ingredients derived from a sustainable green process: lysophospholipids, xanthan gum, sclerotium gum and pullulan.
B	dermosoft® GMCY MB (ND, RSPO)	Glyceryl Caprylate	0.8		This multifunctional wetting agent provides moisturizing properties and is suitable for many cosmetic applications. It has a co-emulsifying effect in emulsions, solubilisates and pigment dispersions. Moreover, it shows a strong antimicrobial activity.
B	NSO Red Velvet Oil™ (N) (NE) (UP)	Solanum lycopersicum Seed Oil; Solanum lycopersicum (Tomato) Seed Oil	10	Oil	NSO Red Velvet Oil™ is a highly unique UPCYCLED (from tomato seeds) and 'active' oil featuring lycopene, a powerful antioxidant and carotenoid, 4 phytosterols and fatty acids. Repair and maintain the skin barrier function, nourish and replenish– a perfect inclusion for your skin's daily vege booster!
B	NSO Native Sandalwood Seed Oil (Australian) (N) (NE)	Fusanus spicatus Kernel Seed Oil	2	Oil	NSO Native Sandalwood Seed Oil's powerful combination of fatty acids from its seed is available as an alternative to commonly used oil-soluble actives and carrier oils. Rich in Omega 3, 6, 9, ximenynic acid (aka santalbic acid), oleic acid, alpha-linolenic acid and palmitic acid is ideal for finished products targeting anti-aging, skin tone, blemish prone skin, age lines, hydration, hair care, cleansers and lip glosses.
B	Mixed Tocopherol 70% (ND)	Tocopherol, Glycine soja Oil	1	Vitamin & Mineral	This ingredient is derived from highly refined soy beans. Tocopherols are natural antioxidants and while alpha tocopherol has the highest biological activity, when it comes to product protection (stability to prevent oil oxidation or discolouration) a general mixture of tocopherols can perform just as well.
C	NE Wild Yam Cellular Extract Concentrate (N) (NE)	Dioscorea villosa Root Extract	2	Extract	NE Wild Yam Cellular Extract delivers the natural molecules this botanical species can offer in a water-soluble format, including diosgenin, tryptophan, amino acids, indole derivatives, benzoic acid and phenolics, to power your products naturally. Consider for blemished skin conditions, premature aging and more.
C	Infitrio™ Inflammaging Complex Concentrate (N) (NE)	Citrus aurantium amara Extract, Tasmannia lanceolata Fruit Extract, Mentha australis Leaf Extract	2	Extract	Introducing a breakthrough in plant science and down regulation of inflammation pre-clinicals - NATIVE EXTRACTS Infitrio™ is a blend of 3 Cellular Extract's and the unique synergies achieved in combining their hydrophilic entourage - delivering a powerhouse of natural compounds to support Infammaging, featuring Bitter Orange, Mountain Pepper Berry and Native River Mint Cellular Extract concentrates. Request the research paper. Consider for haircare, blemished skin conditions, premature aging and more.
C	NE Gotu Kola Cellular Extract Concentrate (N) (NE)	Centella asiatica Extract	2	Extract	NE Gotu Kola Cellular Extract delivers the natural molecules this botanical species can offer in a water-soluble format, including anthocyanins, lignan, protocatechuic acid (PCA), orientin, eriocitrin, phenolics, organic acids, amino acids, sugars, flavonoid glycosides, methoxy-flavones and terpenoids, to power your products naturally. Consider for targeting sensitive skin, strengthening the skin and increasing blood circulation, Eczema, Psoriasis, vein and stretch marks as well as care for blemishes and scars caused by acne.
C	NE Chamomile Cellular Extract Concentrate (N) (NE)	Chamomilla recutita Flower Extract	2	Extract	NE Chamomile Cellular Extract's delivers the natural molecules this botanical species can offer in a water-soluble format, including tryptopham, chlorogenic acid (CGA), apigenin, ferulic acid, axillarin, terpenoids, flavonoid glycosides, amino acids, organic acids and phenolics. Consider for haircare, blemished skin conditions, premature aging and more.

RED VELVET OIL™ Calm Nights Serum I NE-BN-S1



PHASE	NAME	INCI	%w/w	FUNCTION	DESCRIPTION (Highlighted in orange, manufactured or supplied by NATIVE EXTRACTS Pty Ltd)
N – natural ND – naturally derived NE – manufactured / supplied by NATIVE EXTRACTS RSPO – derived from sustainable palm UP – upcycled					
D	dermosoft® 1388 eco (ND)	Glycerin, Water (Aqua), Sodium Levulinate, Sodium Anisate	4	Preservative	This ingredient is a preservative used in certified organic formulations

METHOD (FOR FORMULA OWNERSHIP ONLY)				SPECIFICATION	
				DESCRIPTION	LIMITS
1	Mix phase A using silverson.			Appearance	Serum
2	Pre-mix phase B then add to phase A using silverson.			Colour	Orange
3	Add phase C while mixing.			Odour	Neutral
4	Add phase D while mixing.			pH @ 25°C	4.5 - 5.5
5	Adjust pH to 4.5 - 5.5.				

DISCLAIMER + OBJECTIVE

Red Velvet Oil™ Formulation Guides have been created to inspire and assist in the development process, particularly for brand creators and contract manufacturers, they are to be used as conceptual blueprints intended to aid in the early stages of product development. The formulations are starting points for creating bespoke formulations tailored to a brand's specific needs. Each formulation guide offers a valuable framework that can streamline the development process, but they may require further customization and refinement before being market ready. It is critical to understand that the Red Velvet Oil™ Formulations have not undergone any of the necessary testing required for market release, including:

- Preservative Efficacy Testing (PET) • Microbial Testing • Stability Testing • Label Compliant (INCI lists).

It's important to collaborate with your regulatory and formulating team throughout the development process to ensure your products meet all necessary requirements prior to market release.

QUALITY ASSURANCE RECOMMENDATIONS

To maximise potential for the attached formulation to scale-up and reduce risk, the following quality assurance steps are recommended:

- Preservative Efficacy Testing (PET), Formulation Robustness Testing (FRT) and traditional stability and compatibility testing be undertaken on laboratory scale batches to ensure resilience to microbial contamination, assess formulation physical resilience and establish product shelf-life.
- Preservative Efficacy Testing (PET) does not assess all microbial strains that exists and is representative only, PET may fail to account for microbial strains that are unique to the manufacturer whom should be consulted to ensure the preservative can achieve an appropriate reduction.
- Perform a quality audit or general inspection of the proposed manufacturer.
- Laboratory samples be prepared by the contract manufacturer and compared to the approved development sample to verify the formulation is transferable on the laboratory scale.
- Copies of the contract manufacturer's manufacturing formulation and process be checked against the attached formulation and process, it may be acknowledged that the contract manufacturer may use alternate ingredient sources to that used when preparing the development sample.
- Samples from the scale-up and full-scale production batch be assessed against the approved development samples prior to filling and delivery.
- Manufacturing process validation be performed on bulk, where FRT had been completed on laboratory scale samples, verifying proposed shelf-life.

Conceptual Formula Notice: The Red Velvet Revolution SPF50+ Sunscreen is a concept formulation ONLY.

Some of the extracts recommended may not have yet not been evaluated or approved by the Therapeutic Goods Administration (TGA) nor has the formulation undergone any mandatory SPF testing. Before developing a sunscreen formulation. It is crucial to consult with a regulatory consultant to ensure compliance with relevant regulatory requirements and confirm the safety and efficacy of the ingredients used.

All samples provided by NATIVE EXTRACTS Pty Ltd are conceptual only and not for retail sale, samples have not undergone any shelf life, microbial PET or compatibility testing and are not to be used for commercial purposes.

APPLICATION: Prior to use patch test behind ear. Cease use if any irritation or redness appears, avoid getting in the eye. External use only. Store under 20°C.

Need help with your NPD? - enquiries@nativeextracts.com

Samples Individual Datasheets and Technical Documents on the Individual Cellular Extracts are available on request.

The concept formulations have been created with pH Factor, Formula Development Partner





RED VELVET OIL

Daily Vege Shot Cleanser

FORMULATION GUIDE

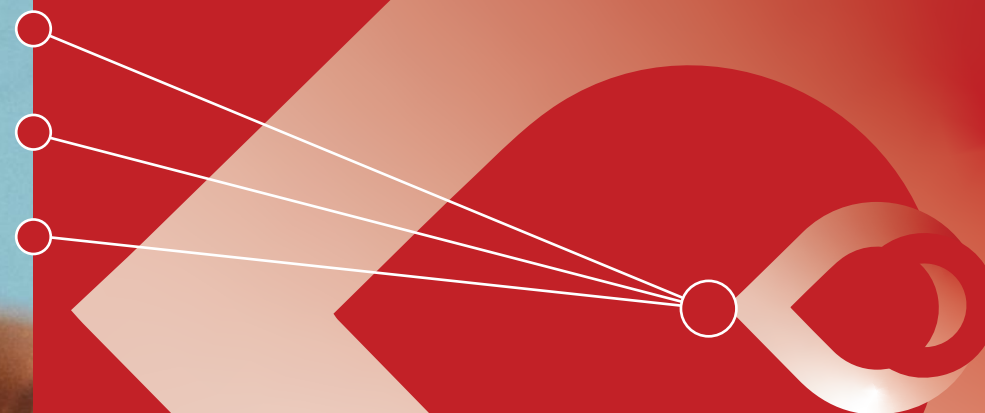
Be the first to introduce Australia's
UPCYCLED Ingredient

The **Red Velvet Daily Vege Shot Cleanser** goes beyond just cleansing, this invigorating cleanser thoroughly removes impurities and makeup, it is packed with the vibrant goodness of **Red Velvet Oil™**, Carrot Seed Oil, Beetroot Cellular Extract, Cucumber Cellular Extract, Radish Cellular Extract, and Watercress Cellular Extract, delivering the power of fresh vegetable extracts to keep the skin healthy and supple.

Lycopene

Hydrate

Revitalising



KAGOME  **NATIVE**
EXTRACTS[®]

Australia's Upcycled Ingredient Innovation Partners

RED VELVET OIL™ Daily Vege Shot Cleanser I NE-DVS-S1



PHASE	NAME	INCI	%w/w	FUNCTION	DESCRIPTION (Highlighted in orange, manufactured or supplied by NATIVE EXTRACTS Pty Ltd)
N – natural ND – naturally derived NE – manufactured / supplied by NATIVE EXTRACTS RSPO – derived from sustainable palm UP – upcycled					
A	Aloe Vera Inner Leaf Juice (N) (NE)	Aloe barbadensis Leaf Juice	To 100	Extract	It is the most potent and pure Aloe Vera Extract from the micronized inner leaf pulp – feed the skin with an outstanding range of natural amino acids, vitamins and minerals.
B	PLANTACARE 810 UP (Caprylyl/Capryl Glucoside) (ND, RSPO)	Caprylyl/Capryl Glucoside, Water	5	Surfactant	Plantacare 810 UP is an alkyl polyglucoside (APG) surfactants that is in a unique class of non-ionic surfactant obtained from renewable, plant-derived raw materials. It has environmental and skin compatibility profiles, creating a synergy of mildness, foaming performance and effective cleansing.
B	MIAMI CS25 (ND, RSPO)	Sodium Cocoyl Glutamate	2	Surfactant	Natural amino acid derived anionic surfactant, produced from glutamic acid and a fatty acid. Leaves a soft and moisturized feeling on the skin. Very mild, hypoallergenic, and non-comedogenic. Excellent cleanser, even in hard water. Gentle cleanser for hair, without leaving a dry, coarse feel.
B	MICONOL LM (ND, RSPO)	Sodium Lauroamphoacetate	3	Surfactant	Offers benefits including mildness, reduced irritation and wide pH stability. Shows compatibility with anionic, nonionic and cationic surfactants.
B	Dehyton® KE-AS (ND, RSPO)	Aqua (Water), Cocamidopropyl Betaine, Sodium Benzoate	4	Surfactant	This is an amphoteric surfactant which means it acts as both anionic (cleansing) and cationic (conditioning) depending on the pH and concentration of the product. This, plus the surfactants foam boosting properties makes it a great choice in shampoo, body wash and conditioning shampoos.
B	MICONOL LM (ND, RSPO)	Purified Water, Sodium Lauroyl Sarcosinate	5	Surfactant	Surfactant known (and used) for its foam-boosting properties and mild cleansing ability.
C	PLANTACARE 810 UP (Caprylyl/Capryl Glucoside) (ND, RSPO)	Caprylyl/Capryl Glucoside, Water	5	Surfactant	Plantacare 810 UP is an alkyl polyglucoside (APG) surfactants that is in a unique class of non-ionic surfactant obtained from renewable, plant-derived raw materials. It has environmental and skin compatibility profiles, creating a synergy of mildness, foaming performance and effective cleansing.
C	dermosoft® GMCY MB (ND, RSPO)	Glyceryl Caprylate	0.5	Preservative	This multifunctional wetting agent provides moisturizing properties and is suitable for many cosmetic applications. It has a co-emulsifying effect in emulsions, solubilises and pigment dispersions. Moreover, it shows a strong antimicrobial activity.
C	NSO Red Velvet Oil™ (N) (NE (UP))	Solanum lycopersicum Seed Oil; Solanum lycopersicum (Tomato) Seed Oil	1	Oil	NSO Red Velvet Oil™ is a highly unique UPCYCLED (from tomato seeds) and 'active' oil featuring lycopene, a powerful antioxidant and carotenoid, 4 phytosterols and fatty acids. Repair and maintain the skin barrier function, nourish and replenish– a perfect inclusion for your skin's daily vege booster!
C	Carrot Oil CLR (N)	Glycine soja Oil (and) Daucus carota sativa (Carrot) Root Extract (and) Beta-Carotene (and) Tocopherol	0.2	Oil	This ingredient is an oil which contains carotenoids and other lipoid-soluble ingredients from the carrot. It is used for application to dry, cracked and scaling skin and scalp, and for the preventative care of hair.
C	Mixed Tocopherol 70% (ND)	Tocopherol, Glycine Soja Oil	0.1	Vitamin & Mineral	Tocopherols are natural antioxidants and while alpha tocopherol has the highest biological activity, when it comes to product protection (stability to prevent oil oxidation or discolouration) a general mixture of tocopherols can perform just as well.

RED VELVET OIL™ Daily Vege Shot Cleanser I NE-DVS-S1

PHASE	NAME	INCI	%w/w	FUNCTION	DESCRIPTION (Highlighted in orange, manufactured or supplied by NATIVE EXTRACTS Pty Ltd)
N – natural ND – naturally derived NE – manufactured / supplied by NATIVE EXTRACTS RSPO – derived from sustainable palm UP – upcycled					
D	NE Beetroot Cellular Extract Concentrate (N) (NE)	Beta vulgaris Root Extract	0.5	Extract	NE Beetroot Cellular Extract delivers the natural molecules this botanical species can offer in a water-soluble format, including tryptophan, lignan, ferulic acid, phenolics, sugars, amino acids and organic acids, to power your products naturally. Consider for premature aging products, in addition to attenuating certain blemished skin conditions and improving skin and hair conditions.
D	NE Cucumber Cellular Extract Concentrate (N) (NE)	Cucumis sativus Fruit Extract	0.5	Extract	NE Cucumber Cellular Extract delivers the natural molecules this botanical species can offer in a water-soluble format, including tryptophan, flavonoid glycosides, phenolics, sugars, amino acids and organic acids, to power your products naturally. Consider for haircare, hydration, blemished skin conditions, and premature aging.
D	NE Watercress Cellular Extract Concentrate (N) (NE)	Nasturtium officinale Leaf Extract	0.5	Extract	NE Watercress Leaf Cellular Extract delivers the natural molecules this botanical species can offer in a water-soluble format, including tryptophan, quercetin, glucosinolates, flavonoid glycosides, amino acids, organic acids and phenolics, to power your products naturally. Consider for haircare, blemished skin conditions, and premature aging.
E	dermosoft® 1388 eco (ND)	Glycerin, Water (Aqua), Sodium Levulinate, Sodium Anisate	4	Preservative	This ingredient is a preservative used in certified organic formulations.
F	Certified Organic Glycerine (palm free) (ND)	Glycerin	4	Humectant	Glycerin is a humectant or water binding additive. It performs a number of functions in a formula including increasing solubility of some actives (herbal extracts, perfumes etc), acting as a moisture reservoir to prevent a product from drying out and/ or as a cost-effective skin conditioning agent.
F	Xanthan Gum FNCS-PC (ND)	Xanthan Gum	1.5	Thickener	This ingredient is an exceptional rheology modifier in water-based systems and can be used in a variety of cosmetics application areas, including lotions, creams, shower gels, shampoos, shaving foams, face masks and make-up formulations.

METHOD (FOR FORMULA OWNERSHIP ONLY)		SPECIFICATION	
		DESCRIPTION	LIMITS
1	Mix phase A .		
2	Add phase B one by one while slowly mixing.	Appearance	Gel / Serum
3	Pre-mix phase C , then add to batch while mixing.	Colour	Orange
4	Add phase D while mixing.	Odour	Neutral
5	Add phase E while mixing.	pH @ 25°C	5.0 - 5.5
6	Pre-mix phase F , then add to batch while slowly mixing.		
7	Adjust pH to 4.5 - 5.5.		

RED VELVET Daily Vege Shot Cleanser I NE-DVS-S1



DISCLAIMER + OBJECTIVE

Red Velvet Oil™ Formulation Guides have been created to inspire and assist in the development process, particularly for brand creators and contract manufacturers, they are to be used as conceptual blueprints intended to aid in the early stages of product development. The formulations are starting points for creating bespoke formulations tailored to a brand's specific needs. Each formulation guide offers a valuable framework that can streamline the development process, but they may require further customization and refinement before being market ready. It is critical to understand that the Red Velvet Oil™ Formulations have not undergone any of the necessary testing required for market release, including:

• Preservative Efficacy Testing (PET) • Microbial Testing • Stability Testing • Label Compliant (INCI lists).

It's important to collaborate with your regulatory and formulating team throughout the development process to ensure your products meet all necessary requirements prior to market release.

QUALITY ASSURANCE RECOMMENDATIONS

To maximise potential for the attached formulation to scale-up and reduce risk, the following quality assurance steps are recommended:

- Preservative Efficacy Testing (PET), Formulation Robustness Testing (FRT) and traditional stability and compatibility testing be undertaken on laboratory scale batches to ensure resilience to microbial contamination, assess formulation physical resilience and establish product shelf-life.
- Preservative Efficacy Testing (PET) does not assess all microbial strains that exists and is representative only, PET may fail to account for microbial strains that are unique to the manufacturer whom should be consulted to ensure the preservative can achieve an appropriate reduction.
- Perform a quality audit or general inspection of the proposed manufacturer.
- Laboratory samples be prepared by the contract manufacturer and compared to the approved development sample to verify the formulation is transferable on the laboratory scale.
- Copies of the contract manufacturer's manufacturing formulation and process be checked against the attached formulation and process, it may be acknowledged that the contract manufacturer may use alternate ingredient sources to that used when preparing the development sample.
- Samples from the scale-up and full-scale production batch be assessed against the approved development samples prior to filling and delivery.
- Manufacturing process validation be performed on bulk, where FRT had been completed on laboratory scale samples, verifying proposed shelf-life.

Conceptual Formula Notice: The Red Velvet Revolution SPF50+ Sunscreen is a concept formulation ONLY .

Some of the extracts recommended may not have yet not been evaluated or approved by the Therapeutic Goods Administration (TGA) nor has the formulation undergone any mandatory SPF testing. Before developing a sunscreen formulation. It is crucial to consult with a regulatory consultant to ensure compliance with relevant regulatory requirements and confirm the safety and efficacy of the ingredients used.

All samples provided by NATIVE EXTRACTS Pty Ltd are conceptual only and not for retail sale, samples have not undergone any shelf life, microbial PET or compatibility testing and are not to be used for commercial purposes.

APPLICATION: Prior to use patch test behind ear. Cease use if any irritation or redness appears, avoid getting in the eye. External use only. Store under 20°C.

Lead the eco-responsible ingredient revolution. **Red Velvet Oil™** is the new global **UPCYCLED** active oil hero for **ZERO WASTE** Beauty brands amplifying the importance of **REUSE – REPURPOSE – RESPONSIBLE** solutions.

Let your creativity drive innovation. Interchange the Cellular Extracts in the formulation, unlock our extensive library of True to Nature botanical possibilities to tell your unique brand stories.

Need help with your NPD? - enquiries@nativeextracts.com

Samples Individual Datasheets and Technical Documents on the Individual Cellular Extracts are available on request.

We look forward to collaborating with you to effectively communicate your unique message.

The concept formulations
have been created with
pH Factor, Formula
Development Partner





RED VELVET OIL

Day Defence Moisturiser

FORMULATION GUIDE

**Be the first to introduce Australia's
UPCYCLED Ingredient**

A lightweight yet sophisticated formulation containing nature's most protective ingredients designed to shield your skin throughout the day. Infused with **Red Velvet Oil™**, Kakadu Plum Cellular Extract, Native River Mint Cellular Extract, Coffee Berry Cellular Extract, Pomegranate Cellular Extract, and Native Seaweed/Tasmanian Kelp Cellular Extract, this powerful moisturiser is your ultimate guardian against daily environmental stressors.

Lycopene

Inflammaging

Antioxidant

KAGOME  **NATIVE**
EXTRACTS[®]

Australia's Upcycled Ingredient Innovation Partners



RED VELVET OIL™ Day Defence Moisturiser | NE-DD-S1



PHASE	NAME	INCI	%w/w	FUNCTION	DESCRIPTION (Hightlighted in orange, manufactured or supplied by NATIVE EXTRACTS Pty Ltd)
N – natural ND – naturally derived NE – manufactured / supplied by NATIVE EXTRACTS RSPO – derived from sustainable palm UP – upcycled					
A	Water demineralised (N)	Aqua	To 100	Solvent	Solvent for ingredients.
A	Certified Organic Glycerine (palm free) (ND)	Glycerin	4	Humectant	Glycerin is a humectant or water binding additive. It performs a number of functions in a formula including increasing solubility of some actives (herbal extracts, perfumes etc), acting as a moisture resevoir to prevent a product from drying out and/ or as a cost-effective skin conditioning agent.
A	Ecoge (ND)	Lysolecithin (and) Sclerotium Gum (and) Xanthan Gum (and) Pullulan	1	Thickener	This ingredient is s the first COSMOS-approved, natural gelling-emulsifying agent able to create light gel-creams. Ecogel™ is a patented optimized combination of natural origin ingredients derived from a sustainable green process: lysophospholipids, xanthan gum, sclerotium gum and pullulan.
B	dermosoft® GMCY MB (ND, RSPO)	Glyceryl Caprylate	0.8		This multifunctional wetting agent provides moisturizing properties and is suitable for many cosmetic applications. It has a co-emulsifying effect in emulsions, solubilisates and pigment dispersions. Moreover, it shows a strong antimicrobial activity.
B	NSO Red Velvet Oil™ (N) (NE) (UP)	Solanum lycopersicum Seed Oil; Solanum lycopersicum (Tomato) Seed Oil	10	Oil	NSO Red Velvet Oil™ is a highly unique UPCYCLED (from tomato seeds) and ‘active’ oil featuring lycopene, a powerful antioxidant and carotenoid, 4 phytosterols and fatty acids. Repair and maintain the skin barrier function, nourish and replenish– a perfect inclusion for your skin’s daily vege booster!
B	Savannah Fruits Refined Shea Butter (N)	Butyrospermum Parkii Butter	3	Butter	This ingredient is highly moisturising, providing deep hydration to the skin. It is rich in fatty acids, including oleic and stearic acids, which contribute to its emollient properties, making it effective in softening and smoothing the skin. With its non-comedogenic nature, it is suitable for various skin types and helps maintain skin's moisture balance.
B	Dermofeel GSC POF (ND)	Glyceryl Stearate Citrate	0.5	Emulsifier	This ingredient is a PEG-free, easy to process, anionic O/W emulsifier. It is based on vegetable raw materials. It shows high compatibility with cosmetic oils and UV filters.
B	Olivem 1000 MB (ND, RSPO)	Cetearyl Olivatate, Sorbitan Olivatate	3.5	Emulsifier	This ingredient is a blend suitable for use as the only emulsifier in a cream or lotion. It is derived from a blend of vegetable oil fatty acids and wheat and oat proteins and helps to emulsify and thicken a cream.
B	Macadamia Oil (N) (NE)	Macadamia intergrifolia Seed Oil	0.5	Oil	Macadamia Oil is an incredibly nourishing oil for the skin, full of properties that essentially act as food for the skin, it can help plump the look of your skin, firms and tightens and provides powerful antioxidant activity to help promote beautiful skin. An effective moisturiser and protectant for skin, bringing new life to dry, tired or dehydrated skin. Repairs dry lips like a barrier pro, restores moisture
B	Almond Sweet Oil (N) (NE)	Prunus amygdalus dulcis Oil	0.5	Oil	Almond Sweet Refined Oil is a nutrient-rich oil boasting a harmonious blend of essential compounds. Abundant in fatty acids such as oleic and linoleic acids, it provides deep moisturisation and supports skin barrier function, making it ideal for diverse skin types. Well known to be enriched with vitamins A, B, and E, to promote skin beauty. The presence of proteins, minerals like magnesium and calcium, and phytosterols may maintain skin elasticity and sooth irritated skin.
B	PALMERA® B1801 (ND, RSPO)	Stearic acid	0.5	Wax	This ingredient is a form of emollient that is quite effective in moisturizing and hydrating the skin. It protects the skin by forming a moisture barrier from moisture loss and keeps it hydrated for longer.
C	Mixed Tocopherol 70% (ND)	Tocopherol, Glycine Soja Oil	0.5	Vitamin & Mineral	This ingredient is derived from highly refined soy beans. Tocopherols are natural antioxidants and while alpha tocopherol has the highest biological activity, when it comes to product protection (stability to prevent oil oxidation or discolouration) a general mixture of tocopherols can perform just as well.

RED VELVET OIL™ Day Defence Moisturiser | NE-DD-S1



PHASE	NAME	INCI	%w/w	FUNCTION	DESCRIPTION (Highlighted in orange, manufactured or supplied by NATIVE EXTRACTS Pty Ltd)
N – natural ND – naturally derived NE – manufactured / supplied by NATIVE EXTRACTS RSPO – derived from sustainable palm UP – upcycled					
C	NNE Kakadu Plum Cellular Extract Concentrate (N) (NE)	Terminalia ferdinandiana Fruit Extract	2	Extract	NE Kakadu Plum Cellular Extract delivers the fruit's natural water-soluble including natural vitamin C (biological ascorbic acid/ascorbate), gallic acid (GA), tryptophan and flavone-C-glycoside. Consider for inflammaging, hydration, haircare, blemished skin conditions, and premature aging.
C	NE Native River Mint Cellular Extract Concentrate (N) (NE)	Mentha australis Leaf Extract	2	Extract	NE Native River Mint Cellular Extract delivers a powerful entourage of water-soluble compounds including rosmarinic acid, terpenoids, methoxy-flavones, flavonoid glycosides, amino acids, organic acids, and phenolics. This extract demonstrated powerful results in a recent pre-clinical trials for the down regulation of inflammation via the nitric oxide pathway, and is a consideration for targeting inflammaging.
C	NE Coffee Berry Cellular Extract Concentrate (N) (NE)	Coffea arabica Fruit Extract	2	Extract	NE Coffee Berry Cellular Extract delivers the natural molecules this botanical species can offer in a water-soluble format, including triconelline, caffeine, chlorogenic acid (CGA), protocatechuic acid (PCA), di-caffeoyl-quinic acid, sugars, amino acids, terpenoids, flavonoid glycosides and phenolics, to power your products naturally. Consider for haircare, blemished skin conditions, and premature aging.
C	NE Pomegranate Cellular Extract Concentrate (N) (NE)	Punica granatum Fruit Extract	2	Extract	NE Pomegranate Cellular Extract has a concert of natural molecules including punicalagins, ellagic acid (EA), gallic acid (GA), amino acids, organic acids and sugars, that are considerations to explore for brightening and anti-aging applications.
C	NE Native Seaweed/ Tasmanian Kelp Cellular Extract Concentrate (N) (NE)	Durvillaea potatorum Extract	2	Extract	Ethically sourced and collected by Kelp harvesters from the clean, unpolluted waters of the shores of King Island, Tasmania, Australia. Only harvested from the shores after storms have torn it from the rocks and cast onto the beaches, to ensure the natural ecosystems are maintained, no kelp is harvested from the ocean forests. Considered the NE Native Seaweed/Tasmanian Kelp Cellular Extract for targeting dehydrated, stressed and damaged skin.

D	dermosoft® 1388 eco (ND)	Glycerin, Water (Aqua), Sodium Levulinate, Sodium Anisate	4	Preservative	This ingredient is a preservative used in certified organic formulations		
---	--------------------------	---	---	--------------	--	--	--

METHOD (FOR FORMULA OWNERSHIP ONLY)				SPECIFICATION	
				DESCRIPTION	LIMITS
1	Mix phase A using silverson and heat to 70-75°C.				
2	Heat phase B to 70-75°C, then add to phase A using silverson - emulsion will form.			Appearance	Cream
3	Switch to mixing and cool to 40°C.			Colour	Orange
4	Add phase C while mixing.			Odour	Neutral
5	Add phase D while mixing.			pH @ 25°C	4.5 - 5.5
6	Adjust pH to 4.5 - 5.5.				

RED VELVET OIL™ Day Defence Moisturiser I NE-DD-S1



DISCLAIMER + OBJECTIVE

Red Velvet Oil™ Formulation Guides have been created to inspire and assist in the development process, particularly for brand creators and contract manufacturers, they are to be used as conceptual blueprints intended to aid in the early stages of product development. The formulations are starting points for creating bespoke formulations tailored to a brand's specific needs. Each formulation guide offers a valuable framework that can streamline the development process, but they may require further customization and refinement before being market ready. It is critical to understand that the Red Velvet Oil™ Formulations have not undergone any of the necessary testing required for market release, including:

- Preservative Efficacy Testing (PET) • Microbial Testing • Stability Testing • Label Compliant (INCI lists).

It's important to collaborate with your regulatory and formulating team throughout the development process to ensure your products meet all necessary requirements prior to market release.

QUALITY ASSURANCE RECOMMENDATIONS

To maximise potential for the attached formulation to scale-up and reduce risk, the following quality assurance steps are recommended:

- Preservative Efficacy Testing (PET), Formulation Robustness Testing (FRT) and traditional stability and compatibility testing be undertaken on laboratory scale batches to ensure resilience to microbial contamination, assess formulation physical resilience and establish product shelf-life.
- Preservative Efficacy Testing (PET) does not assess all microbial strains that exists and is representative only, PET may fail to account for microbial strains that are unique to the manufacturer whom should be consulted to ensure the preservative can achieve an appropriate reduction.
- Perform a quality audit or general inspection of the proposed manufacturer.
- Laboratory samples be prepared by the contract manufacturer and compared to the approved development sample to verify the formulation is transferable on the laboratory scale.
- Copies of the contract manufacturer's manufacturing formulation and process be checked against the attached formulation and process, it may be acknowledged that the contract manufacturer may use alternate ingredient sources to that used when preparing the development sample.
- Samples from the scale-up and full-scale production batch be assessed against the approved development samples prior to filling and delivery.
- Manufacturing process validation be performed on bulk, where FRT had been completed on laboratory scale samples, verifying proposed shelf-life.

Conceptual Formula Notice: The Red Velvet Revolution SPF50+ Sunscreen is a concept formulation ONLY .

Some of the extracts recommended may not have yet not been evaluated or approved by the Therapeutic Goods Administration (TGA) nor has the formulation undergone any mandatory SPF testing. Before developing a sunscreen formulation. It is crucial to consult with a regulatory consultant to ensure compliance with relevant regulatory requirements and confirm the safety and efficacy of the ingredients used.

All samples provided by NATIVE EXTRACTS Pty Ltd are conceptual only and not for retail sale, samples have not undergone any shelf life, microbial PET or compatibility testing and are not to be used for commercial purposes.

APPLICATION: Prior to use patch test behind ear. Cease use if any irritation or redness appears, avoid getting in the eye. External use only. Store under 20°C.

Lead the eco-responsible ingredient revolution. **Red Velvet Oil™** is the new global **UPCYCLED** active oil hero for **ZERO WASTE** Beauty brands amplifying the importance of **REUSE – REPURPOSE – RESPONSIBLE** solutions.

Let your creativity drive innovation. Interchange the Cellular Extracts in the formulation, unlock our extensive library of True to Nature botanical possibilities to tell your unique brand stories.

Need help with your NPD? - enquiries@nativeextracts.com

Samples Individual Datasheets and Technical Documents on the Individual Cellular Extracts are available on request.

We look forward to collaborating with you to effectively communicate your unique message.

The concept formulations
have been created with
pH Factor, Formula
Development Partner





RED VELVET OIL

Revolution Facial Oil

FORMULATION GUIDE

Be the first to introduce Australia's
UPCYCLED Ingredient

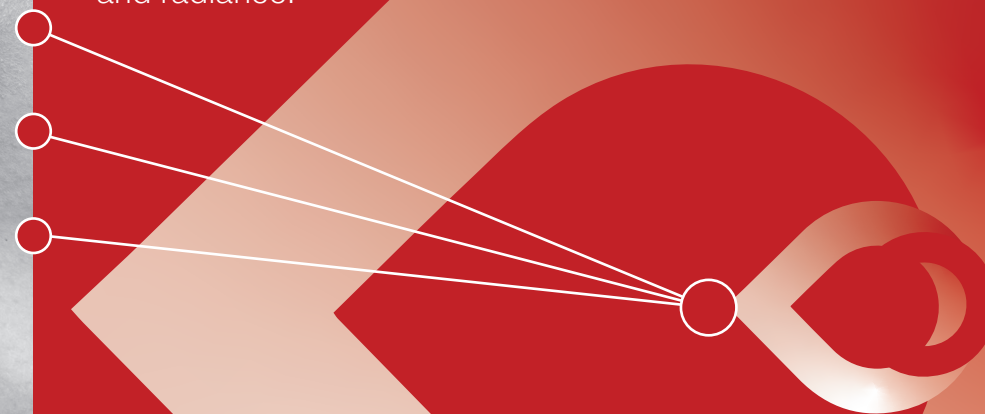
The **Red Velvet Revolution Facial Oil** is designed to be the ultimate indulgence for your skin, transforming it with every drop. Whether you're looking to boost hydration, improve texture, or achieve a radiant glow, this exquisite facial oil offers a multifaceted solution.

Featuring a harmonious fusion of potent natural oils and extracts such as **Red Velvet Oil™**, Native Sandalwood Seed Oil (Australian), Australian Olive Oil, Australian Avocado Oil, and Rainforest Blue Oil (Australian), this facial oil delivers a revolutionary boost of nourishment and radiance.

Lycopene

Nourish

Radiant glow



KAGOME  **NATIVE**
EXTRACTS[®]

Australia's Upcycled Ingredient Innovation Partners

RED VELVET OIL™ Revolution Facial Oil I NE-RFO-S1



PHASE	NAME	INCI	%w/w	FUNCTION	DESCRIPTION (Hightlighted in orange, manufactured or supplied by NATIVE EXTRACTS Pty Ltd)
N – natural ND – naturally derived NE – manufactured / supplied by NATIVE EXTRACTS RSPO – derived from sustainable palm UP – upcycled					
A	Coconut Fractionated MCT Oil (ND)	Caprylic/Capric Triglyceride	To 100	Oil	This ingredient is a 60/40 grade oil that is a liquid at room temperature. It differs from regular Coconut Oil in that it is produced by heat rather than cold pressing. Many consider it to be very comparable to the characteristics of human skin. It is also used on oily skin as it will not clog pores. It can also be used as a treatment to condition dull or dry hair.
A	Vegetane (ND)	Squalane	30	Emollient	Squalane (Olive Derived) is a naturally derived emollient produced from olive oil unsaponifiables. Highly stable and a plant-derived equivalent to human sebum, this Squalane is perfectly compatible with the skin.
A	Jobba Clear Oil (N)	Simmondsia chinensis Seed Oil	10	Oil	This ingredient is an oil rich in Vitamin E and has a very close chemical composition to the skin's sebum, making it suitable for all skin types especially skin that is prone to outbreaks. Due to its fine texture it is great to use on a dry scalp and is easy to wash out.
A	Sytenol A (ND)	Bakuchiol	1	Oil	Bakuchiol is a plant-derived active with collagen stimulating, skin brightening, anti-oxidant and anti-microbial properties. It is widely touted as a plant-based alternative to Retinol.
A	Mixed Tocopherol 70% (ND)	Tocopherol, Glycine soja Oil	1	Vitamin & Mineral	This ingredient is derived from highly refined soy beans. Tocopherols are natural antioxidants and while alpha tocopherol has the highest biological activity, when it comes to product protection (stability to prevent oil oxidation or discolouration) a general mixture of tocopherols can perform just as well.
B	NSO Red Velvet Oil™ (N) (NE) (UP)	Solanum lycopersicum Seed Oil; Solanum lycopersicum (Tomato) Seed Oil	10	Oil	NSO Red Velvet Oil™ is a highly unique UPCYCLED (from tomato seeds) and 'active' oil featuring lycopene, a powerful antioxidant and carotenoid, 4 phytosterols and fatty acids. Repair and maintain the skin barrier function, nourish and replenish – a perfect inclusion for your skin's daily veggie booster!
A	Hemp Seed Oil (N) (NE)	Cannabis sativa Seed Oil	1	Oil	Hemp Seed Oil is an incredibly nourishing oil for the skin, full of properties that essentially act as food for the skin, it plumps the look of your skin, firms and tightens and provides powerful antioxidant activity to help promote beautiful skin. An effective moisturiser and protectant for skin, increasing the elasticity and bringing new life to dry, tired or dehydrated skin.
A	NSO Native Sandalwood Seed Oil (Australian) (N) (NE)	Fusinus spicatus Kernel Seed Oil	2	Oil	NSO Native Sandalwood Seed Oil's powerful combination of fatty acids from its seed is available as an alternative to commonly used oil-soluble actives and carrier oils. Rich in Omega 3, 6, 9, ximenynic acid (aka santalbic acid), oleic acid, alpha-linolenic acid and palmitic acid is ideal for finished products targeting anti-aging, skin tone, blemish prone skin, age lines, hydration, hair care, cleansers and lip glosses.
A	Macadamia Oil (N) (NE)	Macadamia intergrifolia Seed Oil	1	Oil	Macadamia Oil is an incredibly nourishing oil for the skin, full of properties that essentially act as food for the skin, it can help plump the look of your skin, firms and tightens and provides powerful antioxidant activity to help promote beautiful skin. An effective moisturiser and protectant for skin, bringing new life to dry, tired or dehydrated skin. Repairs dry lips like a barrier pro, restores moisture.
A	Australian Olive Oil (N) (NE)	Olea europaea Fruit Oil	1	Oil	A stunning natural oil to provide your skin with essential nutrients including Vit A, D, K, E; Squalene and polyphenols to support hydration, fatty acids needed to support healthy skin for well-aging to teenage blemish prone skin.
A	Australian Avocado Oil (N) (NE)	Persea Gratissima Oil	1	Oil	Avocado Oil is a rich, nourishing oil. Natural moisturising properties for dry, aging and damaged skin.
B	Rainforest Blue Oil (Australian) (N) (NE)	Dysoxylum fraserianum Oil	0.1	Essential Oil	A unique and highly prized oil harvested from the sub-tropical rainforest and distilled in the Northern Rivers Hinterland of New South Wales Australia not only offers a stunning fresh forest odour profile but has a beautiful backstory about eco-conscious sourcing.

RED VELVET OIL™ Revolution Facial Oil I NE-RFO-S1



METHOD (FOR FORMULA OWNERSHIP ONLY)		SPECIFICATION	
1	Mix ingredient in phase A .	DESCRIPTION	LIMITS
2	Add phase B while mixing.	Appearance	Liquid
		Colour	Range
		Odour	Neutral
		pH @ 25°C	N/A

DISCLAIMER + OBJECTIVE

Red Velvet Oil™ Formulation Guides have been created to inspire and assist in the development process, particularly for brand creators and contract manufacturers, they are to be used as conceptual blueprints intended to aid in the early stages of product development. The formulations are starting points for creating bespoke formulations tailored to a brand's specific needs. Each formulation guide offers a valuable framework that can streamline the development process, but they may require further customization and refinement before being market ready. It is critical to understand that the Red Velvet Oil™ Formulations have not undergone any of the necessary testing required for market release, including:

- Preservative Efficacy Testing (PET) • Microbial Testing • Stability Testing • Label Compliant (INCI lists).

It's important to collaborate with your regulatory and formulating team throughout the development process to ensure your products meet all necessary requirements prior to market release.

QUALITY ASSURANCE RECOMMENDATIONS

To maximise potential for the attached formulation to scale-up and reduce risk, the following quality assurance steps are recommended:

- Preservative Efficacy Testing (PET), Formulation Robustness Testing (FRT) and traditional stability and compatibility testing be undertaken on laboratory scale batches to ensure resilience to microbial contamination, assess formulation physical resilience and establish product shelf-life.
- Preservative Efficacy Testing (PET) does not assess all microbial strains that exists and is representative only, PET may fail to account for microbial strains that are unique to the manufacturer whom should be consulted to ensure the preservative can achieve an appropriate reduction.
- Perform a quality audit or general inspection of the proposed manufacturer.
- Laboratory samples be prepared by the contract manufacturer and compared to the approved development sample to verify the formulation is transferable on the laboratory scale.
- Copies of the contract manufacturer's manufacturing formulation and process be checked against the attached formulation and process, it may be acknowledged that the contract manufacturer may use alternate ingredient sources to that used when preparing the development sample.
- Samples from the scale-up and full-scale production batch be assessed against the approved development samples prior to filling and delivery.
- Manufacturing process validation be performed on bulk, where FRT had been completed on laboratory scale samples, verifying proposed shelf-life.

Conceptual Formula Notice: The Red Velvet Revolution SPF50+ Sunscreen is a concept formulation ONLY.

Some of the extracts recommended may not have yet not been evaluated or approved by the Therapeutic Goods Administration (TGA) nor has the formulation undergone any mandatory SPF testing. Before developing a sunscreen formulation. It is crucial to consult with a regulatory consultant to ensure compliance with relevant regulatory requirements and confirm the safety and efficacy of the ingredients used.

All samples provided by NATIVE EXTRACTS Pty Ltd are conceptual only and not for retail sale, samples have not undergone any shelf life, microbial PET or compatibility testing and are not to be used for commercial purposes.

APPLICATION: Prior to use patch test behind ear. Cease use if any irritation or redness appears, avoid getting in the eye. External use only. Store under 20°C.

Need help with your NPD? - enquiries@nativeextracts.com

Samples Individual Datasheets and Technical Documents on the Individual Cellular Extracts are available on request.

We look forward to collaborating with you to effectively communicate your unique message.

The concept formulations
have been created with
pH Factor, Formula
Development Partner





RED VELVET OIL

Revolution Nourish Lip Complex

FORMULATION GUIDE

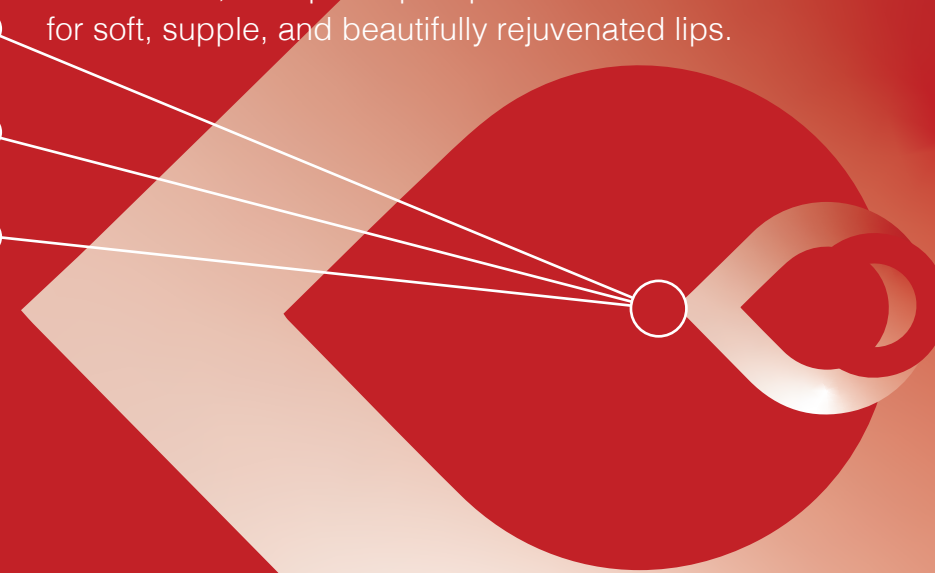
Be the first to introduce Australia's
UPCYCLED Ingredient

The **Red Velvet Revolution Nourish Lip Complex** is your go-to solution for achieving soft, healthy-looking lips. With its nourishing formula and smooth texture, this lip balm glides on effortlessly, providing immediate hydration while working to improve the overall condition of your lips. Enriched with a potent blend of Davidson Plum Cellular Extract, Native Raspberry Cellular Extract, Quandong Cellular Extract, Macadamia Oil, and **Red Velvet Oil™**, this lip complex provides the ultimate care for soft, supple, and beautifully rejuvenated lips.

Lycopene

Nourish

Soothe



KAGOME  **NATIVE**
EXTRACTS

Australia's Upcycled Ingredient Innovation Partners

RED VELVET OIL™ Revolution Nourish Lip Complex I NE-RNLC-S1



PHASE	NAME	INCI	%w/w	FUNCTION	DESCRIPTION (Hightlighted in orange, manufactured or supplied by NATIVE EXTRACTS Pty Ltd)
N – natural ND – naturally derived NE – manufactured / supplied by NATIVE EXTRACTS RSPO – derived from sustainable palm UP – upcycled					
A	Coconut Fractionated MCT Oil (ND)	Caprylic/Capric Triglyceride	To 100	Oil	This ingredient is a 60/40 grade oil that is a liquid at room temperature. It differs from regular Coconut Oil in that it is produced by heat rather than cold pressing. Many consider it to be very comparable to the characteristics of human skin. It is also used on oily skin as it will not clog pores. It can also be used as a treatment to condition dull or dry hair.
A	Natural BBB-Beauty Balm Base (ND)	Hydrogenated Ethylhexyl Olivat (and) Hydrogenated Castor Oil (and) Butyrospermum Parkii (Shea) Butter (and) Tocopherol	70	Base	NATURAL BBB – Beauty Balm Base is a 100% natural derived base, Cosmos approved, Palm free and vegan compliant.
A	NSO Red Velvet Oil™ (N) (NE) (UP)	Solanum lycopersicum Seed Oil; Solanum lycopersicum (Tomato) Seed Oil	10	Oil	NSO Red Velvet Oil™ is a highly unique UPCYCLED (from tomato seeds) and 'active' oil featuring lycopene, a powerful antioxidant and carotenoid, 4 phytosterols and fatty acids. Repair and maintain the skin barrier function, nourish and replenish– a perfect inclusion for your skin's daily vege booster!
A	Macadamia Oil (N) (NE)	Macadamia intergrifolia Seed Oil	1	Oil	Macadamia Oil is an incredibly nourishing oil for the skin, full of properties that essentially act as food for the skin, it can help plump the look of your skin, firms and tightens and provides powerful antioxidant activity to help promote beautiful skin. An effective moisturiser and protectant for skin, bringing new life to dry, tired or dehydrated skin. Repairs dry lips like a barrier pro, restores moisture.
A	Australian Avocado Oil (N) (NE)	Persea Gratissima Oil	1	Oil	Avocado Oil is a rich, nourishing oil. Natural moisturising properties for dry, aging and damaged skin.
B	NE Davidson Plum Cellular Extract Concentrate (N) (NE)	Davidsonia jerseyana Fruit Extract	1	Extract	NE Davidson Plum Cellular Extract delivers the natural molecules this botanical species can offer in a water-soluble format, including anthocyanins, quercetin, gallic acid (GA), ellagic acid (EA), flavonoid glycosides, organic acids, sugars and amino acids, to power your products naturally. Consider for premature aging, age lines, radiance and luminosity, blemished skin conditions, suppleness, inflammation and antioxidant applications in skincare.
B	NE Native Raspberry Cellular Extract Concentrate (N) (NE)	Rubus parvifolius Fruit Extract	1	Extract	NE Native Raspberry Cellular Extract delivers the natural molecules this botanical species can offer in a water-soluble format, including tetrahydroxy flavone, flavone glycoside, gallic acid (GA), ellagic acid (EA), flavonoid glycosides, phenolics, organic acids, and amino acids, to power your products naturally. Consider for haircare, blemished skin conditions, hydration, premature aging and more.
B	NE Quandong Cellular Extract Concentrate (N) (NE)	Santalum acuminatum Fruit Extract	1	Extract	NE Quandong Cellular Extract delivers the natural molecules this botanical species can offer in a water-soluble format, including chlorogenic acid (CGA), anthocyanins, flavanols, flavonoid glycosides, rutin, amino acids, sugars, organic acids and phenolics, to power your products naturally. Consider for haircare, blemished skin conditions, premature aging and more.
C	Mixed Tocopherol 70% (ND)	Tocopherol, Glycine Soja Oil	0.5	Vitamin & Mineral	This ingredient is derived from highly refined soy beans. Tocopherols are natural antioxidants and while alpha tocopherol has the highest biological activity, when it comes to product protection (stability to prevent oil oxidation or discolouration) a general mixture of tocopherols can perform just as well.
D	Campo red 95/10/02-08 (N)	Eclipta Prostrata Extract (and) Melia Azadirachta Leaf Extract (and) Moringa oleifera Seed Oil	1.95	Colour	Natural colour.

RED VELVET OIL™ Revolution Nourish Lip Complex I NE-RNLC-S1



METHOD (FOR FORMULA OWNERSHIP ONLY)		SPECIFICATION	
		DESCRIPTION	LIMITS
1	Mix phase A and heat to 75°C.		
2	Add phase B under high sheer stirring.	Appearance	Balm
3	B Cool to 60°C.	Colour	Orange / Pink
4	Add phase C while mixing.	Odour	Neutral
5	Add phase D while mixing.	pH @ 25°C	N/A
6	Hot pour.		

DISCLAIMER + OBJECTIVE

Red Velvet Oil™ Formulation Guides have been created to inspire and assist in the development process, particularly for brand creators and contract manufacturers, they are to be used as conceptual blueprints intended to aid in the early stages of product development. The formulations are starting points for creating bespoke formulations tailored to a brand's specific needs. Each formulation guide offers a valuable framework that can streamline the development process, but they may require further customization and refinement before being market ready. It is critical to understand that the Red Velvet Oil™ Formulations have not undergone any of the necessary testing required for market release, including:

- Preservative Efficacy Testing (PET) • Microbial Testing • Stability Testing • Label Compliant (INCI lists).

It's important to collaborate with your regulatory and formulating team throughout the development process to ensure your products meet all necessary requirements prior to market release.

QUALITY ASSURANCE RECOMMENDATIONS

To maximise potential for the attached formulation to scale-up and reduce risk, the following quality assurance steps are recommended:

- Preservative Efficacy Testing (PET), Formulation Robustness Testing (FRT) and traditional stability and compatibility testing be undertaken on laboratory scale batches to ensure resilience to microbial contamination, assess formulation physical resilience and establish product shelf-life.
- Preservative Efficacy Testing (PET) does not assess all microbial strains that exists and is representative only, PET may fail to account for microbial strains that are unique to the manufacturer whom should be consulted to ensure the preservative can achieve an appropriate reduction.
- Perform a quality audit or general inspection of the proposed manufacturer.
- Laboratory samples be prepared by the contract manufacturer and compared to the approved development sample to verify the formulation is transferable on the laboratory scale.
- Copies of the contract manufacturer's manufacturing formulation and process be checked against the attached formulation and process, it may be acknowledged that the contract manufacturer may use alternate ingredient sources to that used when preparing the development sample.
- Samples from the scale-up and full-scale production batch be assessed against the approved development samples prior to filling and delivery.
- Manufacturing process validation be performed on bulk, where FRT had been completed on laboratory scale samples, verifying proposed shelf-life.

Conceptual Formula Notice: The Red Velvet Revolution SPF50+ Sunscreen is a concept formulation ONLY .

Some of the extracts recommended may not have yet not been evaluated or approved by the Therapeutic Goods Administration (TGA) nor has the formulation undergone any mandatory SPF testing. Before developing a sunscreen formulation. It is crucial to consult with a regulatory consultant to ensure compliance with relevant regulatory requirements and confirm the safety and efficacy of the ingredients used.

All samples provided by NATIVE EXTRACTS Pty Ltd are conceptual only and not for retail sale, samples have not undergone any shelf life, microbial PET or compatibility testing and are not to be used for commercial purposes.

APPLICATION: Prior to use patch test behind ear. Cease use if any irritation or redness appears, avoid getting in the eye. External use only. Store under 20°C.

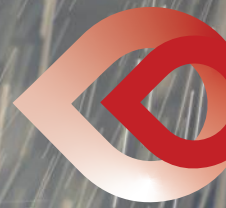
Need help with your NPD? - enquiries@nativeextracts.com

Samples Individual Datasheets and Technical Documents on the Individual Cellular Extracts are available on request.

We look forward to collaborating with you to effectively communicate your unique message.

The concept formulations
have been created with
pH Factor, Formula
Development Partner





RED VELVET OIL

Revolution Shower I Bath I Body Oil

FORMULATION GUIDE

Be the first to introduce Australia's
UPCYCLED Ingredient

A lavish elixir that transforms your shower experience with its decadent blend of oils and extracts featuring an exquisite fusion of skin-loving ingredients of **Red Velvet Oil™**, Hemp Seed Oil, Native Sandalwood Seed Oil (Australian), Australian Olive Oil, Australian Avocado Oil, and vitamin E—that come together to deliver an unparalleled hydration experience, leaving your skin irresistibly soft and glowing.

Lycopene

Replenish

Hydrate



KAGOME  **NATIVE**
EXTRACTS

Australia's Upcycled Ingredient Innovation Partners

RED VELVET OIL™ Shower | Bath | Body Oil | NE-SBBO-S1



PHASE	NAME	INCI	%w/w	FUNCTION	DESCRIPTION (Hightlighted in orange, manufactured or supplied by NATIVE EXTRACTS Pty Ltd)
N – natural ND – naturally derived NE – manufactured / supplied by NATIVE EXTRACTS RSPO – derived from sustainable palm UP – upcycled					
A	Almond Sweet Refined Oil (N) (NE)	Prunus amygdalus dulcis Oil	To 100	Oil	Almond Sweet Refined Oil is a nutrient-rich oil boasting a harmonious blend of essential compounds. Abundant in fatty acids such as oleic and linoleic acids, it provides deep moisturisation and supports skin barrier function, making it ideal for diverse skin types. Well known to be enriched with vitamins A, B, and E, to promote skin beauty. The presence of proteins, minerals like magnesium and calcium, and phytosterols may maintain skin elasticity and sooth irritated skin.
A	Australian Olive Oil (N) (NE)	Olea europaea Fruit Oil	1	Oil	A stunning natural oil to provided your skin with essential nutrients including Vit A, D, K, E; Squalene and polyphenols to support hydration, fatty acids needed to support healthy skin for well-aging to teenage blemish prone skin.
A	Australian Avocado Oil (N) (NE)	Persea gratissima Oil	5	Oil	Avocado Oil is a rich, nourishing oil. Natural moisturising properties for dry, aging and damaged skin.
A	Mixed Tocopherol 70% (ND)	Tocopherol, Glycine soja Oil	1	Vitamin & Mineral	This ingredient is derived from highly refined soy beans. Tocopherols are natural antioxidants and while alpha tocopherol has the highest biological activity, when it comes to product protection (stability to prevent oil oxidation or discolouration) a general mixture of tocopherols can perform just as well
A	NSO Red Velvet Oil™ (N) (NE) (UP)	Solanum lycopersicum Seed Oil; Solanum lycopersicum (Tomato) Seed Oil	10	Oil	NSO Red Velvet Oil™ is a highly unique UPCYCLED (from tomato seeds) and ‘active’ oil featuring lycopene, a powerful antioxidant and carotenoid, 4 phytosterols and fatty acids. Repair and maintain the skin barrier function, nourish and replenish– a perfect inclusion for your skin’s daily vege booster!
A	Hemp Seed Oil (N) (NE)	Cannabis sativa Seed Oil	1	Oil	Hemp Seed Oil is an incredibly nourishing oil for the skin, full of properties that essentially act as food for the skin, it plumps the look of your skin, firms and tightens and provides powerful antioxidant activity to help promote beautiful skin. An effective moisturiser and protectant for skin, increasing the elasticity and bringing new life to dry, tired or dehydrated skin.
A	NSO Native Sandalwood Seed Oil (Australian) (N) (NE)	Fusanus spicatus Kernel Seed Oil	2	Oil	NSO Native Sandalwood Seed Oil’s powerful combination of fatty acids from its seed is available as an alternative to commonly used oil-soluble actives and carrier oils. Rich in Omega 3, 6, 9, ximenynic acid (aka santalbic acid), oleic acid, alpha-linolenic acid and palmitic acid is ideal for finished products targeting anti-aging, skin tone, blemish prone skin, age lines, hydration, hair care, cleansers and lip glosses.
A	Sytenol A (ND)	Bakuchiol	1	Oil	Bakuchiol is a plant-derived active with collagen stimulating, skin brightening, antioxidant and anti-microbial properties. It is widely touted as a plant-based alternative to Retinol.

METHOD (FOR FORMULA OWNERSHIP ONLY)

		SPECIFICATION	
1	Mix ingredient in phase A.	DESCRIPTION	LIMITS
		Appearance	Liquid
		Colour	Orange
		Odour	Neutral
		pH @ 25°C	N/A

RED VELVET OIL™ Shower | Bath | Body Oil | NE-SBBO-S1



DISCLAIMER + OBJECTIVE

Red Velvet Oil™ Formulation Guides have been created to inspire and assist in the development process, particularly for brand creators and contract manufacturers, they are to be used as conceptual blueprints intended to aid in the early stages of product development. The formulations are starting points for creating bespoke formulations tailored to a brand's specific needs. Each formulation guide offers a valuable framework that can streamline the development process, but they may require further customization and refinement before being market ready. It is critical to understand that the Red Velvet Oil™ Formulations have not undergone any of the necessary testing required for market release, including:

- Preservative Efficacy Testing (PET) • Microbial Testing • Stability Testing • Label Compliant (INCI lists).

It's important to collaborate with your regulatory and formulating team throughout the development process to ensure your products meet all necessary requirements prior to market release.

QUALITY ASSURANCE RECOMMENDATIONS

To maximise potential for the attached formulation to scale-up and reduce risk, the following quality assurance steps are recommended:

- Preservative Efficacy Testing (PET), Formulation Robustness Testing (FRT) and traditional stability and compatibility testing be undertaken on laboratory scale batches to ensure resilience to microbial contamination, assess formulation physical resilience and establish product shelf-life.
- Preservative Efficacy Testing (PET) does not assess all microbial strains that exists and is representative only, PET may fail to account for microbial strains that are unique to the manufacturer whom should be consulted to ensure the preservative can achieve an appropriate reduction.
- Perform a quality audit or general inspection of the proposed manufacturer.
- Laboratory samples be prepared by the contract manufacturer and compared to the approved development sample to verify the formulation is transferable on the laboratory scale.
- Copies of the contract manufacturer's manufacturing formulation and process be checked against the attached formulation and process, it may be acknowledged that the contract manufacturer may use alternate ingredient sources to that used when preparing the development sample.
- Samples from the scale-up and full-scale production batch be assessed against the approved development samples prior to filling and delivery.
- Manufacturing process validation be performed on bulk, where FRT had been completed on laboratory scale samples, verifying proposed shelf-life.

Conceptual Formula Notice: The Red Velvet Revolution SPF50+ Sunscreen is a concept formulation ONLY .

Some of the extracts recommended may not have yet not been evaluated or approved by the Therapeutic Goods Administration (TGA) nor has the formulation undergone any mandatory SPF testing. Before developing a sunscreen formulation. It is crucial to consult with a regulatory consultant to ensure compliance with relevant regulatory requirements and confirm the safety and efficacy of the ingredients used.

All samples provided by NATIVE EXTRACTS Pty Ltd are conceptual only and not for retail sale, samples have not undergone any shelf life, microbial PET or compatibility testing and are not to be used for commercial purposes.

APPLICATION: Prior to use patch test behind ear. Cease use if any irritation or redness appears, avoid getting in the eye. External use only. Store under 20°C.

Lead the eco-responsible ingredient revolution. **Red Velvet Oil™** is the new global **UPCYCLED** active oil hero for **ZERO WASTE** Beauty brands amplifying the importance of **REUSE – REPURPOSE – RESPONSIBLE** solutions.

Let your creativity drive innovation. Interchange the Cellular Extracts in the formulation, unlock our extensive library of True to Nature botanical possibilities to tell your unique brand stories.

Need help with your NPD? - enquiries@nativeextracts.com

Samples Individual Datasheets and Technical Documents on the Individual Cellular Extracts are available on request.

We look forward to collaborating with you to effectively communicate your unique message.

The concept formulations
have been created with
pH Factor, Formula
Development Partner





Sunscreens just got UPCYCLED

A new upcycled star for sunscreens is born – **RED VELVET OIL™** – delivering a high source of Lycopene, a potent carotenoid.

New research on Lycopene holds promise into its potential to enhance SPF, supporting damaging effects of UVB radiation, sunburn and lessening the wrinkles and fine lines as a result of photoaging.

Lycopene

Protect

Repair

KAGOME  **NATIVE
EXTRACTS®**

Australia's Upcycled Ingredient Innovation Partners

RED VELVET OIL

Revolution SPF50+ Sunscreen

FORMULATION GUIDE

Be the first to introduce Australia's
UPCYCLED Ingredient

This moisturising complex sunscreen is designed to protect your skin from harmful UV rays while deeply nourishing it. Combining unique oil soluble nutrients from **Red Velvet Oil™** and the Australian Native Sandalwood Seed Oil, and infused with a dynamic blend of skin-loving ingredients including the **NATIVE EXTRACTS Infitrio™** complemented by, Kakadu Plum Cellular Extract, Rosella Cellular Extract, Goji Berry Cellular Extract, and Beetroot Cellular Extract.



RED VELVET OIL™ Revolution SPF50+ Sunscreen I NE-RVRSPF-S1



PHASE	NAME	INCI	%w/w	FUNCTION	DESCRIPTION (Hightlighted in orange, manufactured or supplied by NATIVE EXTRACTS Pty Ltd)
N – natural ND – naturally derived NE – manufactured / supplied by NATIVE EXTRACTS RSPO – derived from sustainable palm UP – upcycled					
A	Cetiol C5 (ND)	Coco-Caprylate	35.95	Emollient & Ester	This ingredient is a fast spreading emollient for personal care applications, especially suitable as an alternative to volatile silicones like cyclomethicone.
B	NSO Red Velvet Oil™ (N) (NE) (UP)	Solanum lycopersicum Seed Oil; Solanum lycopersicum (Tomato) Seed Oil	10	Oil	NSO Red Velvet Oil™ is a highly unique UPCYCLED (from tomato seeds) and 'active' oil featuring lycopene, a powerful antioxidant and carotenoid, 4 phytosterols and fatty acids. Repair and maintain the skin barrier function, nourish and replenish– a perfect inclusion for your skin's daily vege booster!
A	Native Sandalwood Seed Oil (Australian) (N) (NE)	Fusanus spicatus Kernel Seed Oil	2	Oil	The powerful combination of fatty acids from its seed is available as an alternative to commonly used oil-soluble actives and carrier oils. Rich in Omega 3, 6, 9, and Xymenynic acid it is ideal for finished products targeting skin tone, blemish prone skin, age lines, and hydration.
A	Candelilla Wax NF (N)	Euphorbia Cerifera Cera	2	Wax	This ingredient is a vegetable wax derived from the wild growing herbacious plant family Euphorbica Antisyphilitica. Commonly used in cosmetics, Candelilla wax is known for its excellent oil binding, high gloss, remarkable hardness and faint smell.
A	Mango Butter (N)	Mangifera indica Seed Butter	2	Butter	This creamy butter is high in Omega 6 making it great as a barrier protection active. It forms a non-greasy barrier on the skin that is perfect for lipsticks, balms, anti-ageing creams, baby care and hair products.
A	Australian Olive Oil (N) (NE)	Olea europaea Fruit Oil	5	Oil	A stunning natural oil to provided your skin with essential nutrients including Vit A, D, K, E; Squalene and polyphenols to support hydration, fatty acids needed to support healthy skin for well-aging to teenage blemish prone skin.
A	Australian Macadamia Oil (N) (NE)	Macadamia integrifolia Seed Oil	2.5	Oil	Macadamia Oil is an incredibly nourishing oil for the skin, full of properties that essentially act as food for the skin, it can help plump the look of your skin, firms and tightens and provides powerful antioxidant activity to help promote beautiful skin. An effective moisturiser and protectant for skin, bringing new life to dry, tired or dehydrated skin. Repairs dry lips like a barrier pro, restores moisture.
A	PALMEROL® 6830 (ND, RSPO)	Stearyl Alcohol, Cetyl Alcohol	1	Wax	This ingredient is a blend of cetyl and stearyl alcohol which are both naturally derived from mixed vegetable sources. This all-natural ingredient helps to stabilise formuations and can also improve the skin feel and texture. It works well with non-ionic, anionic and cationic primary emulsifiers to build a strong and cosmetically appealing emulsion.
A	Olivem 900 MB (ND, RSPO)	Sorbitan Olivat	4	Emulsifier	This ingredient is a PEG-free co-emulsifier, an ivory waxy solid in flake form with melting range 65 - 75°C, for w/o and w/s systems. Olivem 900 is designed to improve the dispersion of powders in decorative formulations and of inorganic UV attenuating agents in sun care formulations.
A1	Zinclear XP (ND)	Zinc Oxide	22	UV Filter	This ingredient is a USP grade Non-Nano uncoated Zinc oxide and is ideal for tinted and transparent sunscreens.
A1	RonaCare® Zinc Oxide (ND)	Zinc Oxide	3	UV Filter	This ingredient is a UV filter which offers broad spectrum protection against UVA and UVB rays while simultaneously offering soothing, anti-inflammatory properties.
A1	A15-TiO2-S-NJE10 (ND)	Titanium Dioxide (and) Hydrated Silica (and) Jojoba Esters	3	UV Filter	A15-TiO2-S-NJE10 is a non-nano, alumina-free TiO2 Powder treated with Jojoba Esters and Hydrated Silica. It is a hydrophobic fine white powder and is recommended for use in emulsions, anhydrous gels, hot pours and powders. NJE treatment offers a creamy feel and good affinity to the skin.
B	Soy Lecithin (ND)	Lecithin	0.2	Emulsifier	This ingredient is a mixture of phospholipids that can be found in a number of plant sources such as soybean, sunflower and cottonseed oils. Soya Lecithin has advanced softening and moisturising action, leaving the skin soft and supple, especially useful in products targeting dry and dehydrated skin.

RED VELVET OIL™ Revolution SPF50+ Sunscreen I NE-RVRSPF-S1



PHASE	NAME	INCI	%w/w	FUNCTION	DESCRIPTION (Highlighted in orange, manufactured or supplied by NATIVE EXTRACTS Pty Ltd)
N – natural ND – naturally derived NE – manufactured / supplied by NATIVE EXTRACTS RSPO – derived from sustainable palm UP – upcycled					
B	NE Kakadu Plum Cellular Extract Concentrate (N) (NE)	Terminalia ferdinandiana Fruit Extract	0.1	Extract	NATIVE EXTRACTS NE Kakadu Plum Cellular Extract delivers the natural molecules this botanical species can offer in a water-soluble format, including vitamin C (ascorbic acid/ascorbate), gallic acid (GA), tryptophan and flavone-C-glycoside, to power your products naturally. Consider for inflammaging, hydration, haircare, blemished skin conditions, and premature aging.
B	NE Beetroot Cellular Extract Concentrate (N) (NE)	Beta vulgaris Root Extract	0.1	Extract	NATIVE EXTRACTS NE Beetroot Cellular Extract delivers the natural molecules this botanical species can offer in a water-soluble format, including tryptophan, lignan, ferulic acid, phenolics, sugars, amino acids and organic acids, to power your products naturally. Consider for premature aging products, in addition to attenuating certain blemished skin conditions and improving skin and hair condition
B	NE Green Coffee Bean Cellular Extract Concentrate (N) (NE)	Coffea arabica Seed Extract	0.1	Extract	NATIVE EXTRACTS NE Green Coffee Bean Cellular Extract delivers the natural molecules this botanical species can offer in a water-soluble format, including anthocyanins, lignan, protocatechuic acid (PCA), orientin, eriocitrin, phenolics, organic acids, amino acids, sugars, flavonoid glycosides, methoxy-flavones and terpenoids, to power your products naturally. Consider for improving skin appearance, promote hair growth, refresh, clarify, tone problem skin areas, and rejuvenate under-eye skin areas, hydration, and premature aging.
B	NE Goji Berry Cellular Extract Concentrate (N) (NE)	Lycium barbarum Fruit Extract	0.1	Extract	NATIVE EXTRACTS NE Goji Berry Cellular Extract delivers the natural molecules this botanical species can offer in a water-soluble format, including tryptophan, rutin, isorhamnetin, flavonoid glycosides, amino acids and phenolics, to power your products naturally. Consider for improving skin appearance, promote hair growth, refresh, clarify, tone problem skin areas, and rejuvenate under-eye skin areas, hydration, and premature aging.
B	Infitrio™ Inflammaging Complex Concentrate (ND) (NE)	Citrus aurantium amara Extract, Tasmanian lanceolata Fruit Extract, Mentha australis Leaf Extract	0.1	Extract	The NATIVE EXTRACTS Infitrio™ Cellular Extract's unique synergy between its compounds delivers a powerhouse of natural ingredients to consider for haircare, blemished skin conditions, premature aging and more.
B	NE Rosella Cellular Extract Concentrate (N) (NE)	Hibiscus sabdariffa Flower Extract	0.1	Extract	NATIVE EXTRACTS NE Rosella Cellular Extract delivers the natural molecules this botanical species can offer in a water-soluble format, including anthocyanins, chlorogenic acid (CGA), rutin, quercetin, myricetin, phenolics and organic acids. Consider for blemished skin conditions, premature aging and more.
B	Mixed Tocopherol 70% (ND)	Tocopherol, Glycine soja Oil	1	Vitamin & Mineral	This ingredient is derived from highly refined soy beans. Tocopherols are natural antioxidants and while alpha tocopherol has the highest biological activity, when it comes to product protection (stability to prevent oil oxidation or discolouration) a general mixture of tocopherols can perform just as well.
C	Aerosil 200 (NI)	Silica	0.5	Silica	AEROSIL® 200 is a hydrophilic fumed silica with a specific surface area of 200 m²/g. With this product, rheology and thixotropy control of liquid systems, binders, and polymers is possible easily. It is also used to improve free flow and anti-caking characteristics of powders as well as an anti-settling, thickening, and anti-sagging agent. As ingredient it can be used in a broad variety of applications, like lipsticks, sulfate-free shampoos, mascara. The product is listed with the INCI-name 'Silica' and holds a COSMOS certification.
D	Ultra White Pearl Mica (ND)	Mica, Titanium Dioxide	1	Colour	This ingredient is a colour which imparts a white colour to skincare formulations.

RED VELVET OIL™ Revolution SPF50+ Sunscreen I NE-RVRSPF-S1



METHOD (FOR FORMULA OWNERSHIP ONLY)		SPECIFICATION	
		DESCRIPTION	LIMITS
1	Mix phase A and heat to 70-75°C (or to melt). Start homogenising. Take off heat.		
2	Add phase A1 while homogenising, make uniform.	Appearance	Cream
3	Add phase B while homogenising.	Colour	Light orange
4	Add phase C while homogenising. Continue to homogenise for 5 minutes until uniform.	Odour	Neutral
5	Add phase D while mixing.	pH @ 25°C	N/A

DISCLAIMER + OBJECTIVE

Red Velvet Oil™ Formulation Guides have been created to inspire and assist in the development process, particularly for brand creators and contract manufacturers, they are to be used as conceptual blueprints intended to aid in the early stages of product development. The formulations are starting points for creating bespoke formulations tailored to a brand's specific needs. Each formulation guide offers a valuable framework that can streamline the development process, but they may require further customization and refinement before being market ready. It is critical to understand that the Red Velvet Oil™ Formulations have not undergone any of the necessary testing required for market release, including:

• Preservative Efficacy Testing (PET) • Microbial Testing • Stability Testing • Label Compliant (INCI lists).

It's important to collaborate with your regulatory and formulating team throughout the development process to ensure your products meet all necessary requirements prior to market release.

QUALITY ASSURANCE RECOMMENDATIONS

To maximise potential for the attached formulation to scale-up and reduce risk, the following quality assurance steps are recommended:

- Preservative Efficacy Testing (PET), Formulation Robustness Testing (FRT) and traditional stability and compatibility testing be undertaken on laboratory scale batches to ensure resilience to microbial contamination, assess formulation physical resilience and establish product shelf-life.
- Preservative Efficacy Testing (PET) does not assess all microbial strains that exists and is representative only, PET may fail to account for microbial strains that are unique to the manufacturer whom should be consulted to ensure the preservative can achieve an appropriate reduction.
- Perform a quality audit or general inspection of the proposed manufacturer.
- Laboratory samples be prepared by the contract manufacturer and compared to the approved development sample to verify the formulation is transferable on the laboratory scale.
- Copies of the contract manufacturer's manufacturing formulation and process be checked against the attached formulation and process, it may be acknowledged that the contract manufacturer may use alternate ingredient sources to that used when preparing the development sample.
- Samples from the scale-up and full-scale production batch be assessed against the approved development samples prior to filling and delivery.
- Manufacturing process validation be performed on bulk, where FRT had been completed on laboratory scale samples, verifying proposed shelf-life.

Conceptual Formula Notice: The Red Velvet Revolution SPF50+ Sunscreen is a concept formulation ONLY.

Some of the extracts recommended may not have yet not been evaluated or approved by the Therapeutic Goods Administration (TGA) nor has the formulation undergone any mandatory SPF testing. Before developing a sunscreen formulation. It is crucial to consult with a regulatory consultant to ensure compliance with relevant regulatory requirements and confirm the safety and efficacy of the ingredients used.

All samples provided by NATIVE EXTRACTS Pty Ltd are conceptual only and not for retail sale, samples have not undergone any shelf life, microbial PET or compatibility testing and are not to be used for commercial purposes.

APPLICATION: Prior to use patch test behind ear. Cease use if any irritation or redness appears, avoid getting in the eye. External use only. Store under 20°C.

Need help with your NPD? - enquiries@nativeextracts.com

Samples Individual Datasheets and Technical Documents on the Individual Cellular Extracts are available on request.

We look forward to collaborating with you to effectively communicate your unique message.

The concept formulations
have been created with
pH Factor, Formula
Development Partner





RED VELVET OIL

Royal Citrus Face Scrub

FORMULATION GUIDE

**Be the first to introduce Australia's
UPCYCLED Ingredient**

Perfect for those seeking a gentle yet effective exfoliation that unveils a fresh, glowing complexion.

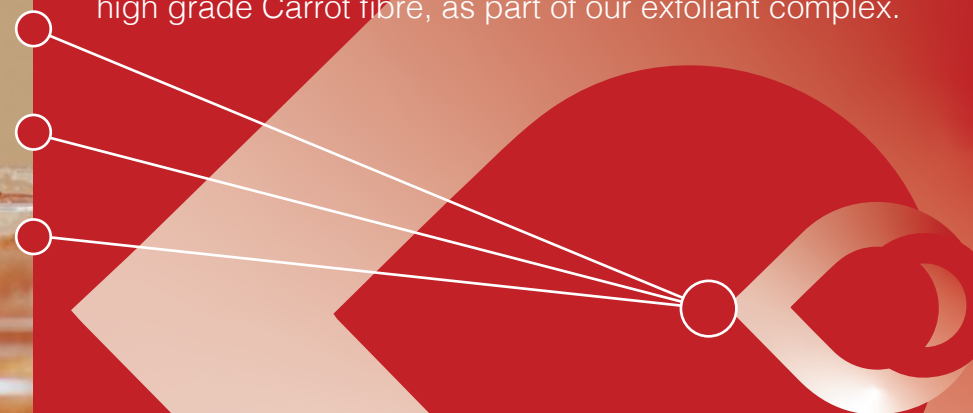
This revitalising facial scrub gently exfoliates while nourishing and rejuvenating your complexion.

Formulated with a powerful blend of natural ingredients including **Red Velvet Oil™**, Finger Lime Caviar Cellular Extract, Lemon Myrtle Cellular Extract, Silky Oil Grass Cellular Extract, and carrot fibre exfoliant. This stunning scrub has 2 UPCYCLED ingredients with the addition of Australia's newest Upcycled ingredient – introducing a high grade Carrot fibre, as part of our exfoliant complex.

Lycopene

Luminosity

Cell turn over



KAGOME  **NATIVE[®]
EXTRACTS**

Australia's Upcycled Ingredient Innovation Partners

RED VELVET OIL™ Royal Citrus Face Scrub I NE-RCS-S1



PHASE	NAME	INCI	%w/w	FUNCTION	DESCRIPTION (Highlighted in orange, manufactured or supplied by NATIVE EXTRACTS Pty Ltd)
N – natural ND – naturally derived NE – manufactured / supplied by NATIVE EXTRACTS RSPO – derived from sustainable palm UP – upcycled					
A	Demineralised Water (N)	Aqua	To 100	Solvent	Solvent for ingredients.
A	Certified Organic Glycerine (palm free) (N)	Glycerin	5	Humectant	Glycerin is a humectant or water binding additive. It performs a number of functions in a formula including increasing solubility of some actives (herbal extracts, perfumes etc), acting as a moisture reservoir to prevent a product from drying out and/ or as a cost-effective skin conditioning agent.
A	Vanatural (N)	Bentonite	0.4	Thickener	A pure and natural suspension stabiliser, emulsion optimizer and rheology modifier for all topical products. It is particularly suited for creams, lotions, suspensions and other personal care products marketed as organic or natural.
A	Xanthan Gum (ND)	Xanthan Gum	0.25	Thickener	This ingredient is a crystal-clear polymer which efficiently thickens and stabilizes emulsions and surfactant-based formulations, providing excellent viscosity boosted by electrolytes like NaCl.
B	dermosoft® GMCY MB (ND, RSPO)	Glyceryl Caprylate	0.8	Preservative	This multifunctional wetting agent provides moisturizing properties and is suitable for many cosmetic applications. It has a co-emulsifying effect in emulsions, solubilises and pigment dispersions. Moreover, it shows a strong antimicrobial activity.
B	NSO Red Velvet Oil™ (N) (NE) (UP)	Solanum lycopersicum Seed Oil; Solanum lycopersicum (Tomato) Seed Oil	10	Oil	NSO Red Velvet Oil™ is a highly unique UPCYCLED (from tomato seeds) and 'active' oil featuring lycopene, a powerful antioxidant and carotenoid, 4 phytosterols and fatty acids. Repair and maintain the skin barrier function, nourish and replenish– a perfect inclusion for your skin's daily vege booster!
B	Savannah Fruits Refined Shea Butter (N)	Butyrospermum Parkii Butter	3	Butter	This ingredient is highly moisturising, providing deep hydration to the skin. It is rich in fatty acids, including oleic and stearic acids, which contribute to its emollient properties, making it effective in softening and smoothing the skin. With its non-comedogenic nature, it is suitable for various skin types and helps maintain skin's moisture balance.
B	Rice Bran Wax (ND)	Oryza sativa Bran Wax	1.75	Wax	Rice bran wax is the vegetable wax extracted from the bran oil of rice (Oryza sativa). The main components of rice bran wax are aliphatic acids (wax acids) and higher alcohol esters. Rice bran wax also contains unsaponifiable constituents such as free fatty acids (palmitic acid), squalene and phospholipids. In cosmetics, rice bran wax is used as an emollient, and is the basis material for some exfoliation particles. It may also serve as a substitute for Carnauba wax.
B	Montanov 68 MB (ND, RSPO)	Cetearyl Alcohol, Cetearyl Glucoside, Water, Glucose	1.5	Emulsifier	This ingredient is an O/W emulsifier that can be used for natural/ "green" concepts. It can create fluid to a thick cream with a rich texture.
B	Olivem 1000 MB (ND, RSPO)	Cetearyl Olivinate, Sorbitan Olivinate	4	Emulsifier	This ingredient is a blend suitable for use as the only emulsifier in a cream or lotion. It is derived from a blend of vegetable oil fatty acids and wheat and oat proteins and helps to emulsify and thicken a cream.
C	Finger Lime Caviar Cellular Extract Concentrate (N) (NE)	Citrus australasica Fruit Extract	3	Extract	NE Finger Lime Caviar Cellular Extract delivers the natural molecules this botanical species can offer in a water-soluble format, including limocitrin, tryptophan, flavone-C-glycoside, flavonoid glycosides, organic acids, amino acids and phenolics, to power your products naturally. Consider for hydration, blemished skin conditions, and premature aging.
C	Lemon Myrtle Cellular Extract Concentrate (N) (NE)	Backhousia citriodora Leaf Extract	3	Extract	NE Lemon Myrtle Cellular Extract delivers the natural molecules this botanical species can offer in a water-soluble format, including gallic acid, catechin, epicatechin, procyanidins, terpenoids, citral, ellagic acid (EA), gallic acid (GA), methoxy-flavones, methoxy-tetrahydroxy flavones, thymol (monoterpene), flavonoid glycosides and amino acids, to power your products naturally. Consider for hydration, haircare, blemished skin conditions and premature aging.

RED VELVET OIL™ Royal Citrus Face Scrub I NE-RCS-S1



PHASE	NAME	INCI	%w/w	FUNCTION	DESCRIPTION (Highlighted in orange, manufactured or supplied by NATIVE EXTRACTS Pty Ltd)
N – natural ND – naturally derived NE – manufactured / supplied by NATIVE EXTRACTS RSPO – derived from sustainable palm UP – upcycled					
C	Silky Oil Grass Cellular Extract Concentrate (N) (NE)	Cymbopogon bombycinus Extract	0.5	Vitamin & Mineral	An exciting extract of Australia's native lemongrass. This Cellular Extract harnesses the water-soluble entourage, including orientin , a phyto-compound considered for targeting inflamed and stressed skin.
D	dermosoft® 1388 eco (ND)	Glycerin, Water (Aqua), Sodium Levulinate, Sodium Anisate	3	Preservative	This ingredient is a preservative used in certified organic formulations.
E	Upcycled Carrot Powder (ND) (NE)	Carrot Powder	5	Exfoliant	Australia's first Upcycled Carrot powder, fine milled for a gentle exfoliant action, to polish the skin, a source of beta carotene and natural fibres.
E	Pumice Stone Superfine Face - Exfoliant	Pumice	1.5	Exfoliant	Produced by volcanoes, Pumice Stone is a naturally occurring stone composed of balsamic minerals such as silicon, oxygen, magnesium and iron, all essential minerals for soft and radiant skin.
E	Bamboo 200 Face Exfoliant	Bambusa arundinacea Stem Powder (Fine for Face)	1.5	Exfoliant	Bamboo powder is rich in silica, physically these give a medium-hardness exfoliation .

METHOD (FOR FORMULA OWNERSHIP ONLY)		SPECIFICATION	
		DESCRIPTION	LIMITS
1	Mix phase A using silverson and heat to 70-75°C.		
2	Heat phase B to 70-75°C, then add to phase A using silverson - emulsion will form.	Appearance	Creamy
3	Switch to mixing and cool to 40°C.	Colour	Orange
4	Add phase C while mixing.	Odour	Neutral
5	Add phase D while mixing.	pH @ 25°C	4.5 - 5.5
6	Adjust pH to 4.5 - 5.5.		
7	Add phase E while gently mixing.		

Let your creativity drive innovation. Interchange the Cellular Extracts in the formulation, unlock our extensive library of True to Nature botanical possibilities to tell your unique brand stories.

RED VELVET OIL™ Royal Citrus Face Scrub I NE-RCS-S1



DISCLAIMER + OBJECTIVE

Red Velvet Oil™ Formulation Guides have been created to inspire and assist in the development process, particularly for brand creators and contract manufacturers, they are to be used as conceptual blueprints intended to aid in the early stages of product development. The formulations are starting points for creating bespoke formulations tailored to a brand's specific needs. Each formulation guide offers a valuable framework that can streamline the development process, but they may require further customization and refinement before being market ready. It is critical to understand that the Red Velvet Oil™ Formulations have not undergone any of the necessary testing required for market release, including:

• Preservative Efficacy Testing (PET) • Microbial Testing • Stability Testing • Label Compliant (INCI lists).

It's important to collaborate with your regulatory and formulating team throughout the development process to ensure your products meet all necessary requirements prior to market release

QUALITY ASSURANCE RECOMMENDATIONS

To maximise potential for the attached formulation to scale-up and reduce risk, the following quality assurance steps are recommended:

- Preservative Efficacy Testing (PET), Formulation Robustness Testing (FRT) and traditional stability and compatibility testing be undertaken on laboratory scale batches to ensure resilience to microbial contamination, assess formulation physical resilience and establish product shelf-life.
- Preservative Efficacy Testing (PET) does not assess all microbial strains that exists and is representative only, PET may fail to account for microbial strains that are unique to the manufacturer whom should be consulted to ensure the preservative can achieve an appropriate reduction.
- Perform a quality audit or general inspection of the proposed manufacturer.
- Laboratory samples be prepared by the contract manufacturer and compared to the approved development sample to verify the formulation is transferable on the laboratory scale.
- Copies of the contract manufacturer's manufacturing formulation and process be checked against the attached formulation and process, it may be acknowledged that the contract manufacturer may use alternate ingredient sources to that used when preparing the development sample.
- Samples from the scale-up and full-scale production batch be assessed against the approved development samples prior to filling and delivery.
- Manufacturing process validation be performed on bulk, where FRT had been completed on laboratory scale samples, verifying proposed shelf-life.

Conceptual Formula Notice: The Red Velvet Revolution SPF50+ Sunscreen is a concept formulation ONLY .

Some of the extracts recommended may not have yet not been evaluated or approved by the Therapeutic Goods Administration (TGA) nor has the formulation undergone any mandatory SPF testing. Before developing a sunscreen formulation. It is crucial to consult with a regulatory consultant to ensure compliance with relevant regulatory requirements and confirm the safety and efficacy of the ingredients used.

All samples provided by NATIVE EXTRACTS Pty Ltd are conceptual only and not for retail sale, samples have not undergone any shelf life, microbial PET or compatibility testing and are not to be used for commercial purposes.

APPLICATION: Prior to use patch test behind ear. Cease use if any irritation or redness appears, avoid getting in the eye. External use only. Store under 20°C.

Lead the eco-responsible ingredient revolution. **Red Velvet Oil™** is the new global **UPCYCLED** active oil hero for **ZERO WASTE** Beauty brands amplifying the importance of **REUSE – REPURPOSE – RESPONSIBLE** solutions.

Need help with your NPD? - enquiries@nativeextracts.com

Samples Individual Datasheets and Technical Documents on the Individual Cellular Extracts are available on request.

We look forward to collaborating with you to effectively communicate your unique message.

The concept formulations
have been created with
pH Factor, Formula
Development Partner

