



## SalSphere® Hair Rejuvenator (SS HR)

*A technology that enhances the natural appearance of the hair with functional botanical extracts.*

Botanical oil treatments are a great way to naturally condition, soothe, balance, cleanse, and invigorate the hair and scalp. They leave hair feeling soft, shiny, and silky, making them excellent for treating damaged, dry, and dull hair. The longer they are left in, the more effective they are.

When botanical extracts are used in shampoos, their efficacy is extremely limited because they tend to get washed off. SalSphere® Hair Rejuvenator is designed to enhance the deposition of extracts onto the hair.

### UNIQUE FEATURES

#### 1 RESTORES THE NATURAL SHINE

Effective deposition of the botanical extracts thanks to proprietary encapsulation system.

#### 2 KEEPS HAIR LIGHT

The sub-micron spheres adhere to the hair, keeping it light and bouncy, unlike heavy silicones that flatten hair.

#### 3 PROTECTS FROM HEATED STYLING INSTRUMENTS

The encapsulated extracts are triggered by the heat generated from styling tools, for ultimate protection.

### HOW THE TECHNOLOGY HELPS YOU

SalSphere® is a proprietary technology comprised of sub-micron spheres (Figure 1). The botanical extracts are encapsulated in the core. SS HR makes it easy to formulate unique products that are natural.



### FUNCTIONAL BOTANICAL EXTRACTS

**Grape seed extract:** Rich in linoleic acid (essential fatty acid); regenerative properties for hair and scalp.

**Safflower extract:** Reduces hair loss and increases hydration by penetrating hair cuticle to the root.

**Olive extract:** Naturally conditions hair and protects from unsightly breakage and split ends

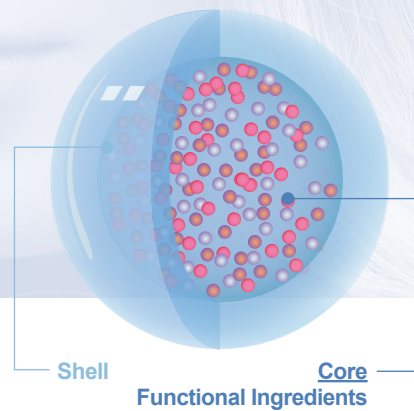


Figure 1: Structure of SalSphere® Hair Rejuvenator with its shell and core infused with the botanical blend.



SS HR raw



1

Shampoo



2

Conditioner



3

Serum

# SalSphere<sup>®</sup> Hair Rejuvenator (SS HR)

*A technology that enhances the natural appearance of the hair with functional botanical extracts.*

## ENHANCED DEPOSITION

Deposition tests were performed on hair treated with SalSphere<sup>®</sup> Hair Rejuvenator vs. free botanicals in a conditioner. The amount of botanicals remaining on the hair after rinsing was determined by ethanol extraction, followed by GCMS Analysis (Figure 2).

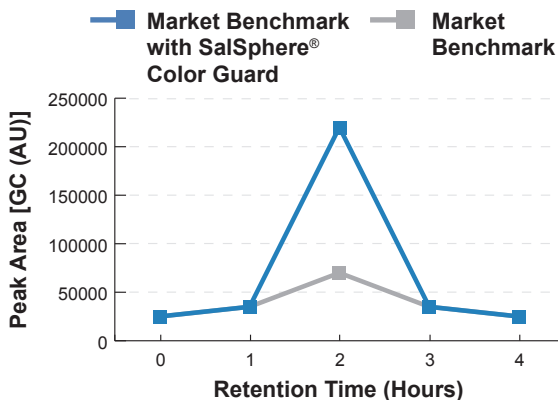


Figure 2: Deposition of botanical extracts by SalSphere<sup>®</sup> Hair Rejuvenator was over three times greater than that of free botanicals.

## COMPLEMENTARY SOLUTIONS

**SalSphere<sup>®</sup> Color Guard:** SS CG protects both the dye and the hair, resealing the cuticle and providing chemical and UV protection for the fragile pigment molecules inside - tripling the duration of most home color treatment kits.

**SalSphere<sup>®</sup> Style Protector:** SS SP features encapsulated silicones used to protect hairstyles for the entire day. The system provides slow, controlled-release of silicones, maintaining an effective lower level of silicone on the hair. The result is long-lasting style with no greasy, heavy look or feel.

**SalSphere<sup>®</sup> Natural Hair Growth Promoter:** SS NHGP is a targeted delivery system that uses encapsulated procyanidin B2 (apple extract) to stimulate hair growth.

## FORMULATION

Ingredients	(W/W %)
SalSphere <sup>®</sup> Hair Rejuvenator	5
SalSphere <sup>®</sup> Natural Hair Growth Promoter	2
HydroSal <sup>®</sup> SalCool	1
Salvona Pre-Mix CW # 5016	30
DI Water	62

## TECHNICAL DATA

Appearance @ 20°C	Opaque Liquid
Applications	Hair care applications such as shampoos, conditioners, and serums
Color	Off-white
Odor	Characteristic
pH (1 % solution)	4.5 ± 1.5
Shelf Life (months)	18
Usage Level (wt%)	2-3
Storage (°C)	Closed container at 12-32°