

SalSphere® Skin Repair (SS SR)

A non-steroidal, anti-inflammatory technology to reduce the symptoms of atopic dermatitis (eczema).

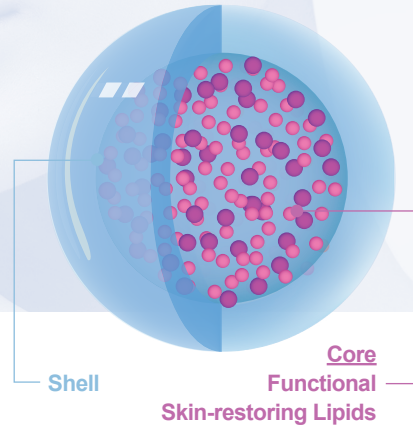


Figure 1: The sub-micron structure of SS SR.

An alternative to steroid treatment for dermatitis, SS SR improves the barrier properties that help seal moisture in the skin. Effective and long-lasting hydration helps the skin repair itself and heal the area naturally.



UNIQUE FEATURES

- 1 CONTROLLED EFFICIENT DELIVERY** Stabilizes lipids that are prone to oxidation and slowly delivers them to the skin.
- 2 DERMACOSMETIC TECHNOLOGY** Delivers benefits equal to prescription-grade products.
- 3 SAFE ALTERNATIVE TO TOPICAL STEROIDS**

TECHNOLOGY

SS SR is a sub-micron technology (Figure 1) that encapsulates special functional lipids that rebuild cell membranes.

The soft sub-micron spheres deliver functional essential fatty acid that would not be stable without encapsulation, such as conjugated linoleic acid (CLA).



TREATMENT FOR ATOPIC DERMATITIS

Three pictures from a clinical study where patients used SS SR in a lotion. The healing effect of the technology was noticeable in just a few days (Figure 2).

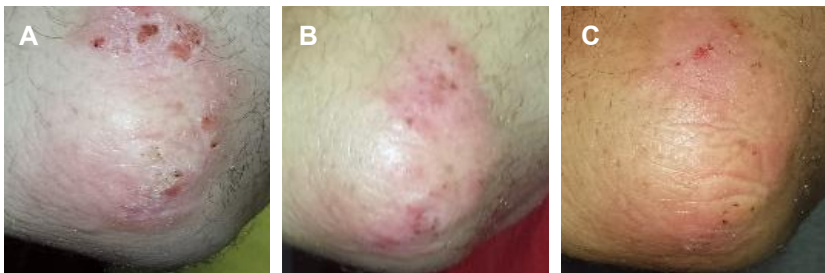


Figure 2: Effect of treatment containing 5% SalSphere® Skin Repair on a plaque psoriasis at (A) t=0, (B) t=30, and (C) t=60 days (left to right).

SalSphere® Skin Repair (SS SR)

A non-steroidal, anti-inflammatory technology to reduce the symptoms of atopic dermatitis (eczema).

EXTENDED RELEASE ON SKIN

The second key feature is the slow release of CLA on the skin (Figure 3). The skin study shows that SS SR enables the slow release of CLA onto the skin's surface.

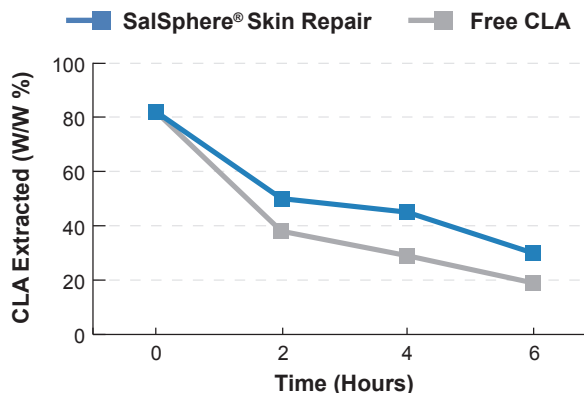


Figure 3: SS SR provides higher CLA concentration over time than a cream containing free CLA. The amount of CLA extracted from the skin is represented as percent of initial amount (n=3), from a lotion containing 10% CLA.

BARRIER PROPERTIES

Trans-epidermal water loss (TEWL) was used to compare the efficacy of a cream containing 10% SS SR to a prescription market product that claims to reduce AD symptoms through "skin barrier" mechanism (Figure 4). The lotions have equal benefits, despite the benchmark containing 30 times more functional ingredients.

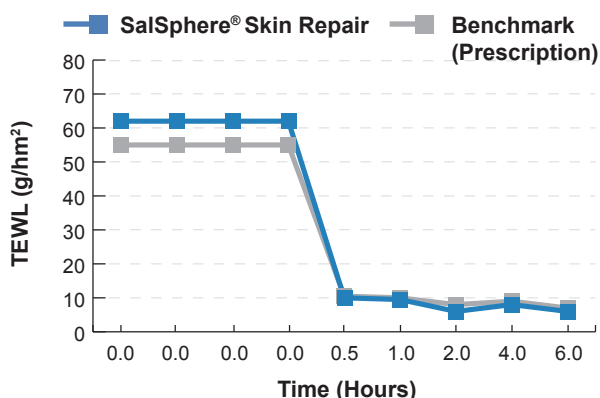


Figure 4: In-vivo TEWL testing of SS SR versus prescription.

STORAGE STABILITY

SS SR is specially designed to protect CLA. CLA is unstable at room temperature and tends to oxidize rapidly, resulting in discoloration and an unpleasant odor. The encapsulation protects the CLA from oxidation and prevents the development of this odor.

FORMULATION

Ingredients	(W/W %)
SalSphere® Skin Repair	3
SalSphere® Aqua Skin	5
Pre-Mix A #5019	20
DI Water	71
Preservative	1

TECHNICAL DATA

Appearance @ 20°C	Opaque emulsion
Applications	Used to treat inflamed skin, atopic dermatitis, eczema
Color	White to off-white
Odor	Characteristic
pH (1 % solution)	4 ± 1
Shelf Life (months)	18
Usage Level (wt%)	5-10
Storage (°C)	Closed container at 12-32°