

# SalSphere® Natural Anti-Blemish (SS NAB)

*A blend of natural botanicals to gently treat blemishes.*

SS NAB is a superior solution for treating acne with sensitive skin, or for those that would like to use a natural remedy. This technology offers the best solution utilizing natural extracts that are difficult to harness and retain their potency at top performance. The SS NAB blend of botanicals is designed to target all the symptoms of acne for a complete solution.

SalSphere® technology encapsulates the ingredients to minimize instability, loss of potency over time, and discoloration. It is also a time release technology that will keep the functional ingredients on the skin for a longer time, allowing for greater efficacy than when using free botanicals.

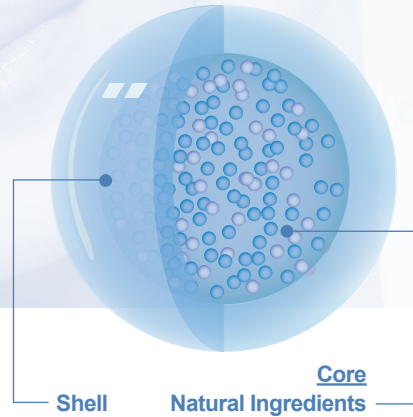


Figure 1: The sub-micron of SS NAB, with the natural ingredients infused within the core.

## UNIQUE FEATURES

- 1 NATURAL INGREDIENTS**  
Provides anti-blemish technology without harsh chemicals.
- 2 EASY TO FORMULATE WITH**  
One system for treating all of the symptoms from blemishes.
- 3 GENTLE, SLOW RELEASE**  
Safe for sensitive skin due to release of small doses over time.

## TECHNICAL DATA

<b>Appearance @ 20°C</b>	Opaque paste
<b>Color</b>	Beige
<b>Odor</b>	Characteristic
<b>pH (1% Soln)</b>	2.8
<b>Shelf Life (months)</b>	24
<b>Usage Level (wt%)</b>	5%
<b>Storage (°C)</b>	Closed container at 12-32°



## ACTIVE INGREDIENTS

**WHITE WILLOW BARK EXTRACT**, contains salicylic acid, a natural exfoliant, and is able to help skin shed dead cells and clear pores.

**BROMELAIN**, a mixture of protein digesting enzymes found in pineapple juice and stems, is an enzymatic exfoliator, that can also reduce the redness, bruising and pain due to its anti-inflammatory properties.

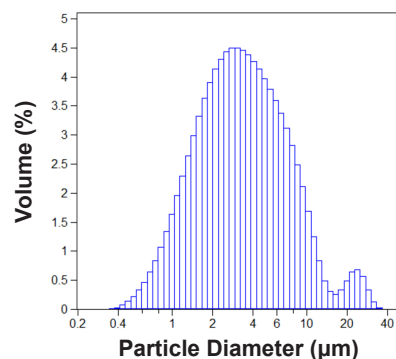
**CHAMOMILE**, a flower often used as a tea infusion, has been shown to be have skin soothing and anti-inflammatory properties in skin care application.

**LICORICE ROOT EXTRACT**, derived from the root of the plant Glycyrrhiza Glabra, helps control oil production, and has anti-inflammatory, antioxidant, and antineoplastic properties.

**OATMEAL**, a natural remedy with a long history of being used as a skin protectant, work as an antioxidant and an antigenotoxic agent while enhancing the skin barrier formation.

**CITRIC ACID**, a natural chemical exfoliant, breaks down the substance that holds dead skin together unclogging pores and clearing debris.

## DIFFERENTIAL VOLUME



0.040-2000µm  
Volume: 100%, Mean: 4.610µm,  
Median: 3.245µm, S.D.: 4.491µm,  
d<sub>10</sub>: 1.209µm, d<sub>90</sub>: 9.010µm