

PROCEDURE:

Mix all components of phase A and heat to 80°C.

Mix phase B while stirring and heat to 80°C.

Add B in A while homogenizing at 12.000 rpm for 2 minutes.

Adjust the pH value to 4.5.

velvety foot cream for soft & cared feet

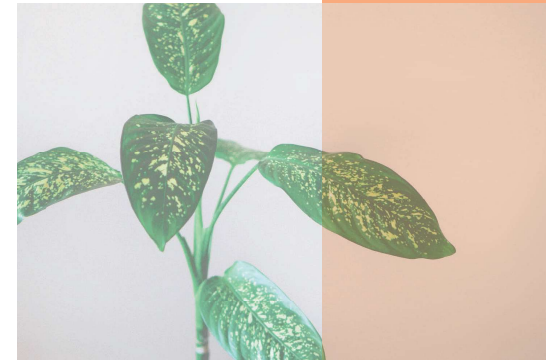
A refreshing and comforting sensation

Phase	Ingredients	%
A	Water	64.4
	<i>Aqua</i>	
	Glycerin ¹	3.0
	<i>Glycerin</i>	
	Evicare® EC 8	2.0
	<i>Caprylyl Glycol, Ethylhexylglycerin</i>	
B	Evicare® aquatex 80E	0.2
	<i>Xanthan Gum</i>	
	Evicare® wintergreen	0.2
	<i>Salicylic Acid</i>	
	Almond Oil ²	15.0
	<i>Prunus Amygalus Dulcis Oil</i>	
	Evicare® emulgiza rich	6.0
	<i>Glyceryl Stearate, Cetearyl Alcohol, Glyceryl Behenate</i>	
	Berry Wax ³	4.0
	<i>Rhus Verniciflua Peel Cera</i>	
Sunflower Wax ³	2.0	
<i>Helianthus Annuus Seed Cera</i>		
Castor Oil ²	2.0	
<i>Rizinus Communis Seed Oil</i>		
C	Evicare® PGPR	1.0
	<i>Polyglyceryl-3 Polyricinoleate</i>	
	Evicare® toco soy	0.2
	<i>Tocopherol</i>	
	Sodium Hydroxide (20%)	q.s.
<i>Aqua, Sodium Hydroxide</i>		

Supplier: ¹Cremer Oleo, ²Gustav Heess, ³Kahl



pH:	4.5
Viscosity:	38900 cP (Brookfield, 10 rpm)
Challenge Test:	A (ISO 11930)
Centrifugation:	stable (5000 rpm, 5 min)
Stability Test:	stable (3 months at 40°C)
Price/kg:	6.76 €



This velvety foot cream is for soft feet and supple calves. Due to Evicare® wintergreen, dead skin cells are gently removed and the combination of Evicare emulgiza rich and Evicare® PGPR leaves a nourishing and non-sticky feeling.

This composition smoothes the skin surface, increases elasticity and thus significantly reduces the tendency to cracks and calluses.