



õsmomist 108-4.29

Floral milk-to-mist emulsion with a fresh, dewy veil and a light & soft second-skin feel for a healthy face



RICHNESS

PROCESS

APPLICATION



FORMULATION FEATURES

- Light & ethereal mist
- Fresh & dewy veil
- Fast penetration
- Soft second-skin feel
- Floral water of Hamamelis

FUNCTIONAL INGREDIENTS

- Heliofeel™ 22 MB (2%) – Emulsifier**
- Sprayable emulsion
 - Soft second-skin feel

ACTIVE INGREDIENTS

- Dendriclear™**
- Rebalances the acnebiome™
- BiotyFerment™ ASHWA**
- Helps keep the skin relaxed

	INGREDIENT	INCI NAME	SUPPLIER	FUNCTION	%
A	Organic floral water of Hamamelis	Hamamelis Virginiana Leaf Water	IES Ingredient	Vehicle & active ingredient	82.40
	Glycerin Codex	Glycerin	Interchimie	Humectant	5.00
	E-Leen® Green A	Pentylene Glycol (and) Phenylpropanol	Minasolve	Preservative	2.00
A1	Avicel® PC-611	Microcrystalline Cellulose (and) Cellulose Gum	Dupont	Gelling agent	2.00
B	Heliofeel™ 22 MB	Glyceryl Stearate Citrate (and) Polyglyceryl-3 Stearate (and) Hydrogenated Lecithin	Lucas Meyer Cosmetics	Emulsifier	2.00
	Saboderm TCC Dub OE HP	Caprylic/Capric Triglyceride Ethyl Oleate	Sabo Stearinerie Dubois	Emollient Emollient	2.00 3.00
C	Dendriclear™	Glycerin (and) Water (and) Polylysine	Lucas Meyer Cosmetics	Active ingredient	0.40
	BiotyFerment™ ASHWA	Water (and) Glycerin (and) Withania Somnifera Root Extract	Lucas Meyer Cosmetics	Active ingredient	1.00
	Beauty Floral	Fragrance	IFF	Fragrance	0.20

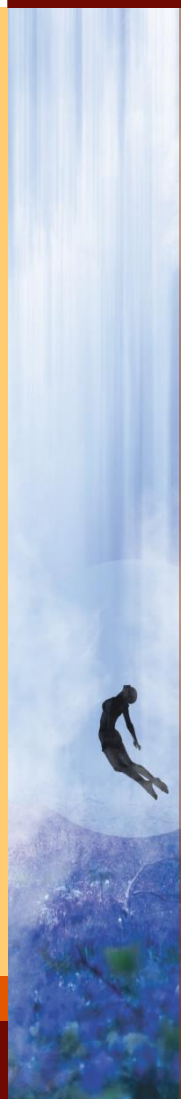
Manufacturing Procedure:

1. Prepare and heat phase A and B at 65°C.
2. Add A1 under maximum stirring 5min (rotor stator homogenizer)
3. Add B into A and emulsify under high stirring 5min 2500rpm (rotor stator homogenizer)
4. Cool down under 40°C and add C one by one under slow stirring

Formula Specifications at D1:

Aspect: White supple lotion
 Viscosity: (Brookfield LV, 25°C, spindle 2, 12rpm, 1min): 900 - 1100 mPa.s
 pH: 4.5 - 5.0
 Challenge test: pass
 Pilot batch: 26kg

Stability Tests: On lab batch 3 kg
 Up to 1 months at 50°C
 Up to 3 months at: Room temperature, 4-8°C and 45°C
 Freeze thaw cycles (24h at 4°C and 24h at 45°C - 2 weeks)
 Centrifugation (3000 rpm, 20 min): stable
 Vibrating table (400 rpm, 4h): stable



SPRAY

*Natural Origin Content calculated at the best of our knowledge in accordance with our understanding of ISO standard 16128. The content was calculated with suppliers' information on naturalness when available or otherwise with our estimations.

Information and suggestions with respect to the composition or use of our products are provided in good faith based on the state of our current technical and scientific knowledge, but without any undertaking or guarantee from ourselves or our suppliers as to their relevance, accuracy, presentation or use, or the suitability of our products for any specific purpose. Such information and suggestions shall not be deemed to grant to anyone any license on patents or other intellectual property rights. We do not guarantee that the use made of our products (alone or in combination with other products), information and suggestions will respect the intellectual property rights of third parties. Users of our products shall themselves determine the suitability of our products for their intended use and, as the case may be, obtain the required regulatory approvals for the commercialization of their finished products. Users of our products, information and suggestions shall do so at their own risk and we will therefore accept no liability whatsoever with respect thereto.